

2025

PRODUCT
COLLECTION

iShineLUX



Shenzhen iShineLux Technology Co.,Ltd
(Dongguan iShineLux Technology Co.,Ltd)

Tel:0086-769-87770656
Web:www.ishinelux.com
Email:sales@ishinelux.com



Shenzhen Office: 320, No. 1, Longwu Industrial Zone, Shangfen Community, Minzhi Street, Longhua District, Shenzhen
Factory Address: S7 Building, Tianan Cyber Park, Fenggang, Dongguan, Guangdong, China





28,000 SQ.M

320+ Employees



About IShineLUX

iShineLux is one of recognized globally as one of the most competitive and successful LED light fixtures companies. Our business model enables us to capture the most valuable part of the value chain while minimizing our production cost and differentiate with other companies. Most importantly, it allows us to control and reinforce the quality of our product throughout the value chain.

From the beginning of our existence nearly 16 years ago, iShineLux has held product quality as our top priority. From 2015- launched our first private mold light fixtures “Diamond” flood light to SKYWING series sports and high mast light, our 5 or 7 years product quality guarantee is a testament to our commitment to quality. Ahead of the original plan, iShineLux have accumulatively developed more 100 private mold LED light fixtures until 2024 and will launch 7 new products later this year.

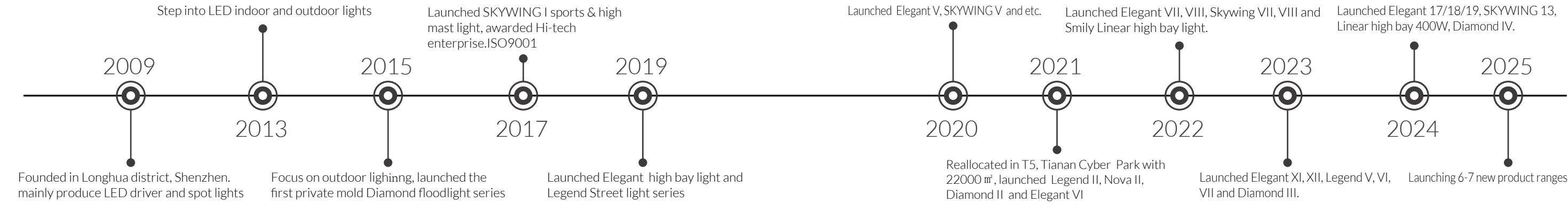
Our cut-edge R&D capability and relationship with TUV Rhineland are at the foundation of our long term competitive advantage and commitment to provide customers of your caliber the best product at the most competitive price.

We
Are
Caring

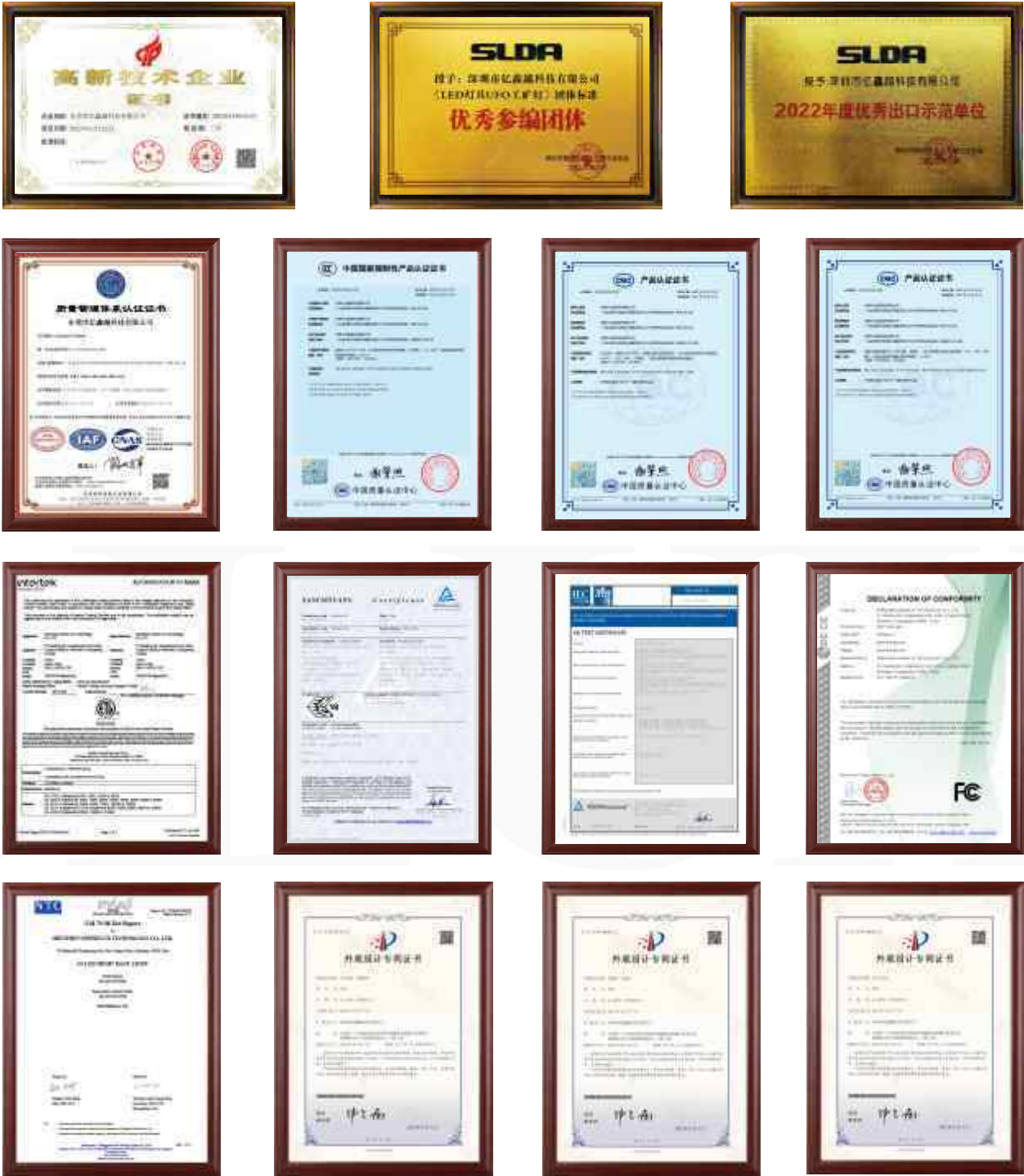


- Super Brightness Light Efficacy
 - IOT Lighting Solution
 - DIY sports and high mast Lighting
 - Environmental Friendly Package
 - Optics Design to minimize the light loss
- Optics Design to minimize the light loss
 - Zigbee, LORA, PLC, DALI- D4i, DMX
 - Lighting Source Replaceable
 - Maintenance Free & Longevity +

iShineLux MILESTONE



Qualification



Applications

Sport & Area



Sport Fields



Architectural & Building Surrounds



Area Site Lighting



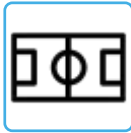
Security Lighting



Hockey Field



Baseball Field



Football Field



tennis court

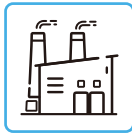
Harsh & Hazardous Application



Oil, Gas, and Petrochemical



Generator Factory



Foundries



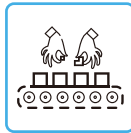
Papermaking Factory



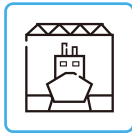
Dock and Platform



Heavy Industrial Warehouse



Equipment Processing Factory



Dockyard



Chemical Plant

Street & Roadway



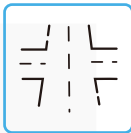
Routes /Country Road



Roadways & Residential streets



Highways/Main streets



Road Intersections



Non-Motorized Vehicles and Sidewalk Lighting



Open Car Parks



Plazas/Square lighting



Outdoor Industrial and Logistics Areas

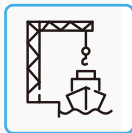
Special Purpose



Garage Parking



Tunnels



Port / Coastal Area



Billboard



Urban wall mounted

Industry & Warehouse



Industry & Warehouse



Storage Facilities



Factories



Warehouses



Indoor Sport Fields



Logistics Facilities

Urban & Park



Public Spaces



Parks and Cycle Paths



Squares and Monuments



Large Pedestrian Areas



City Streets in Historic Centers



Urban Wall Mounted

Category

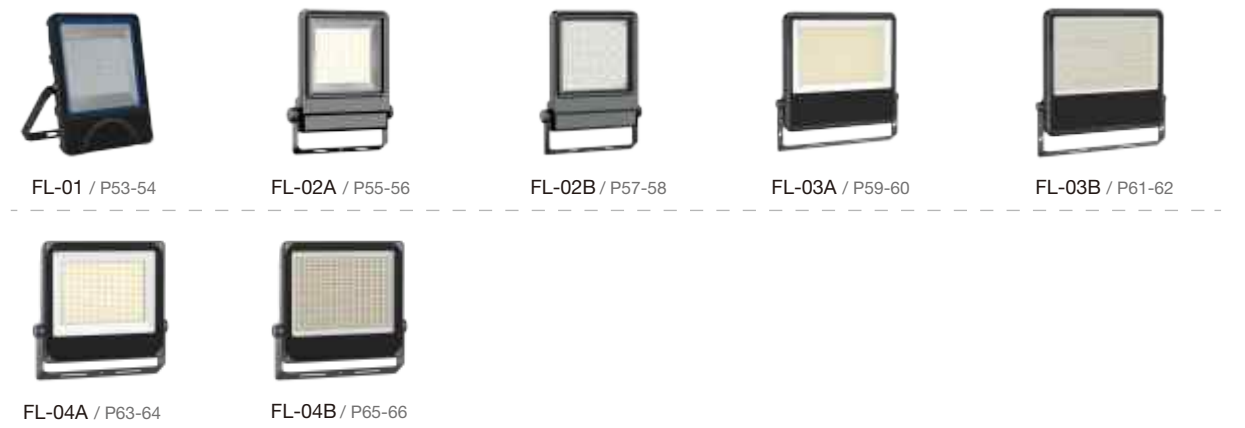
SKYWING Sports & High Mast Light >>>



NOVA Modular Light >>>



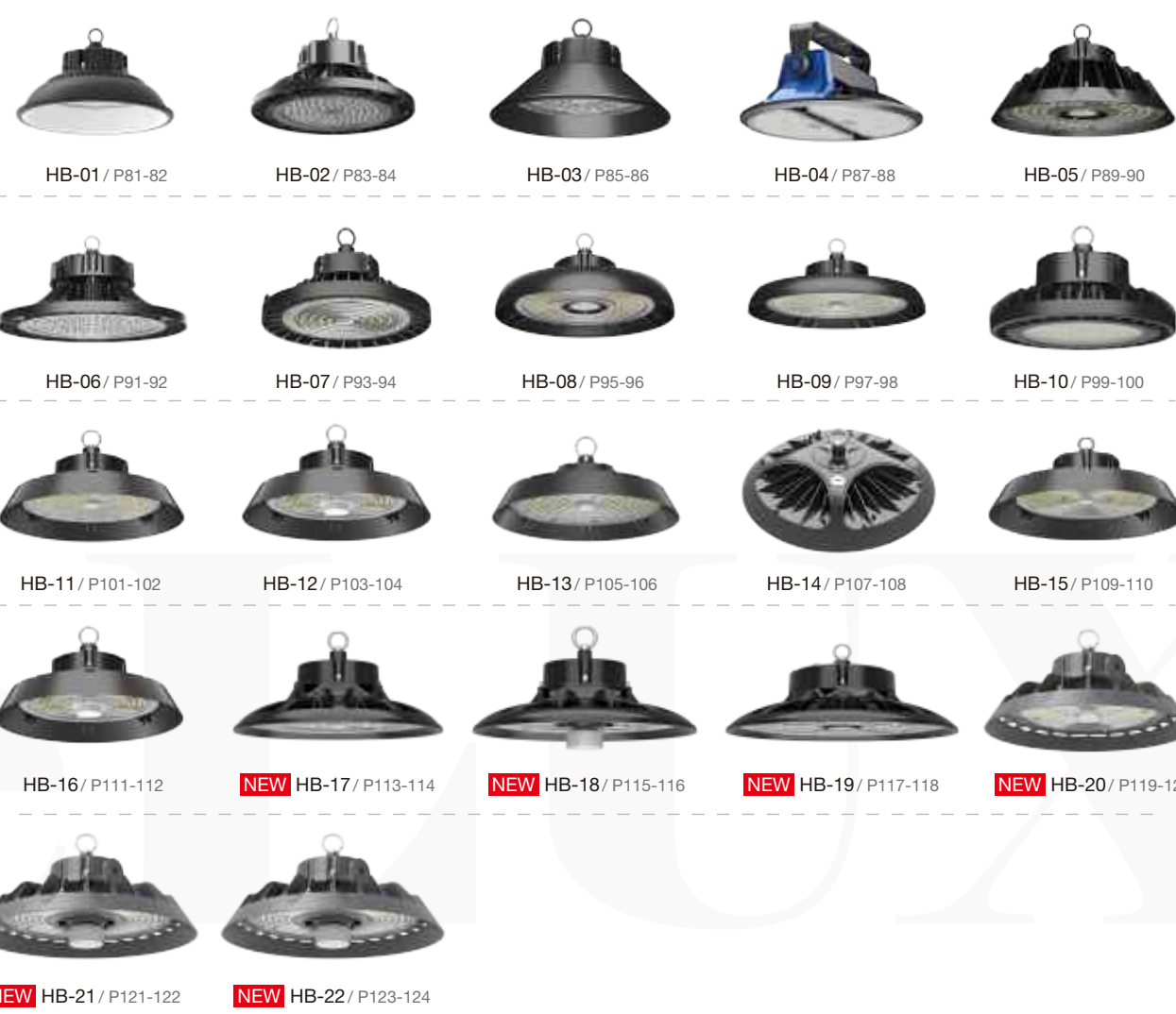
DIAMOND Flood Light >>>



LEGEND Street Light >>>



ELEGANT High Bay Light >>>



SMILY Linear High Bay Light >>>



ROBUS Explosion-proof Light >>>

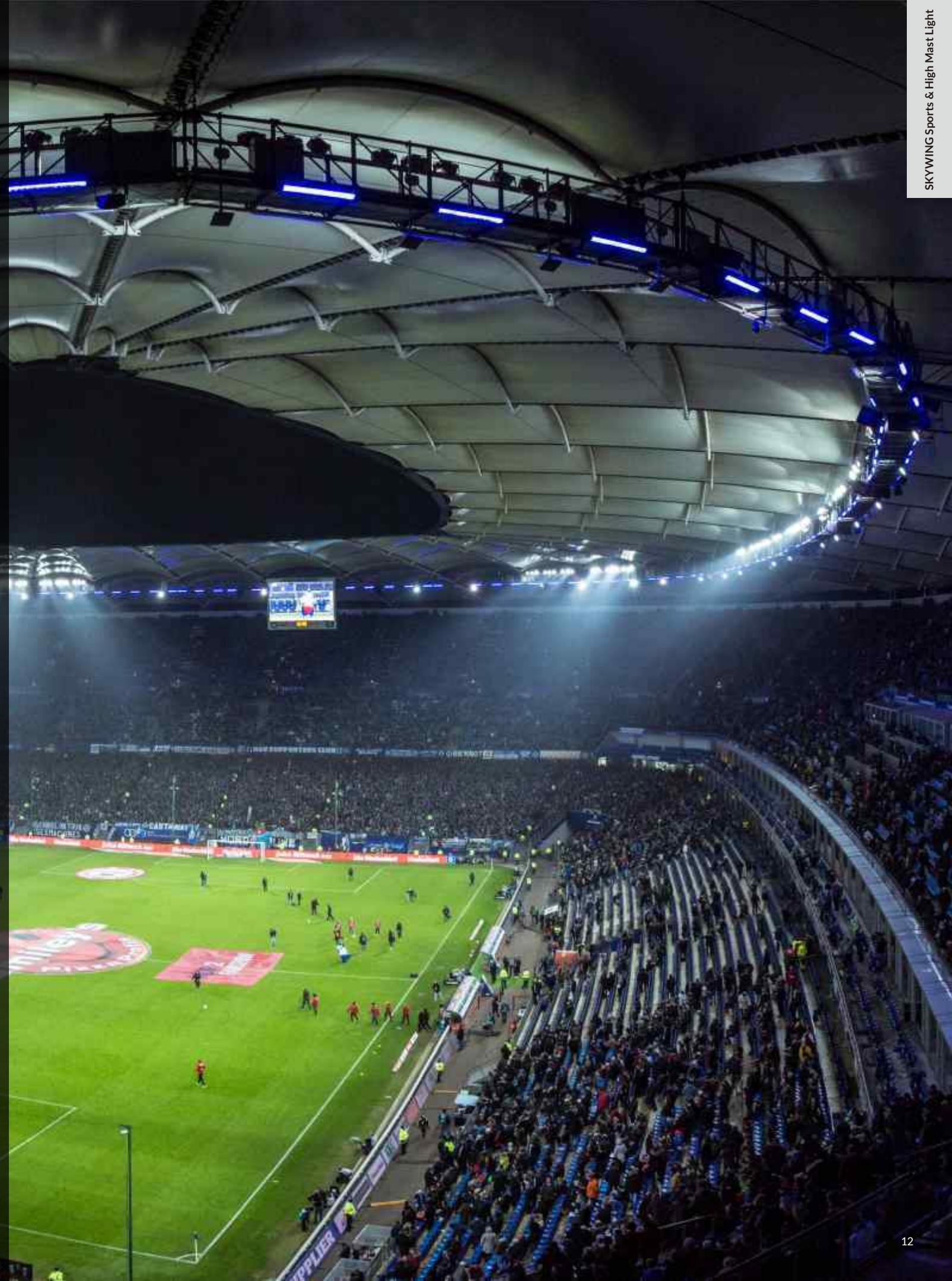


High Temperature Light >>>

SKYWING

Sports & High Mast Light

Sports & High Mast Lights are the excellent energy-efficient solutions for large spaces, such as stadium, sports field, airport, docks and construction sites, etc.



Lighting Standards

The European Standard EN 12193 is specially established for sports lighting to enable a good quality sports lighting through recommendations and requirements. The main norms defines:

Average level of illuminance (Eh ave in lux [lx])

- Maximise visual perception

Light uniformity (U0)

- Maximise visual comfort

Colour rendering index (Ra or CRI)

- Maximise real colour perception

Glare (GR)

- Minimise discomfort

Upward light ratio (ULR x%)

- Minimise upward light

Maintenance facor (MF)

- Maximise the lumen maintenance



Class definition



Level of competition

	Class		
	I	II	III
International/National	•		
Regional	•	•	
Local	•	•	•
Training		•	•
Recreational			•



1. Stadium & Large Scale Football Court
2. Small & Medium Size Football Court
3. Padel Court
4. Tennis Court
5. Other Sports Facilities



SF-01



SF-02



SF-03



SF-04



SF-05



SF-06



SF-07



SF-08



SF-09



SF-10



SF-11



NEW SF-12

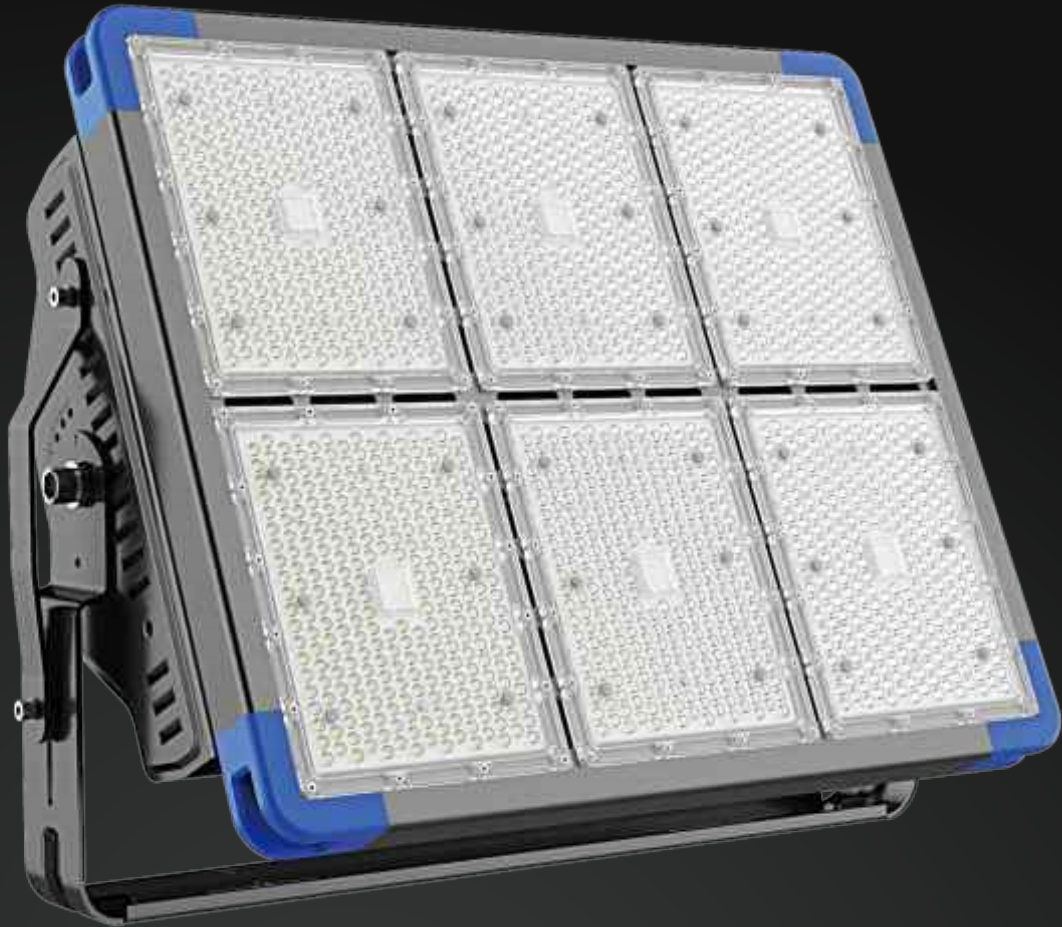


NEW SF-13

SKYWING SF01

Sports & High Mast Light

High wattage from 200W to 1440W
Light efficiency up to 140lm/W
High strength polycarbonate lens, optical lighting distribution: 25°/45°/60°/90°
Cold forging technology with al1070, thermal conductivity 236w/m*25 C
Blue Aluminum Corner create unique and industrial look and customized color available
Black Frame with extrusion aluminum provide high mechanical strength, best heat dissipation
Integrated copper breather valve, balance internal and external temperature and humidity
Extrusion aluminum frame, high mechanical strength and excellent thermal management
"L" Type extended bracket and arms with 4mm thickness, anti-typhoon rating 17
180°Adjustable Bracket, allows for precise installation
Top brand LED chip and driver, ensure the product quality and lifetime
Ingress protection: IP66 waterproof
Double surge protection: Driver & extra 10KV SPD

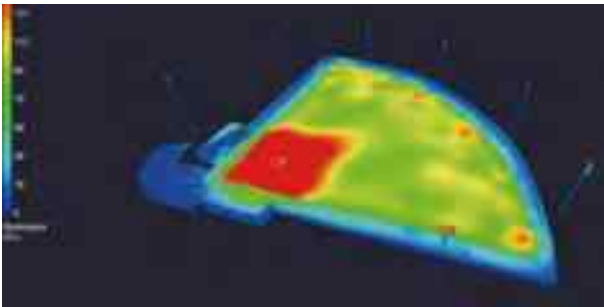


Features:

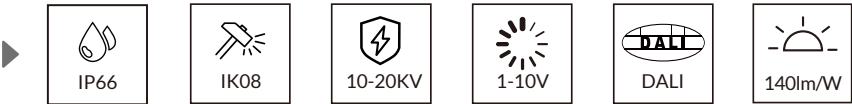
· Square floodlight.



· Single module 180W with narrow beam angles are available to to maximize light while controlling uniformity and glare.



· Two types bracket options providing easy installation



Technical specification:

Model No.	ISL-XQCD-200W	ISL-XQCD-360W	ISL-XQCD-540W	ISL-XQCD-720W	ISL-XQCD-1080W	ISL-XQCD-1440W
Power	200W	360W	540W	720W	1080W	1440W
Input Voltage	AC100-277V; 50/60Hz					
Lumen EFF	140LM/W (±5%)					
LED Brand	LUMILEDS 3030					
Driver Brand	MEANWELL / SOSEN /INVENTRONICS					
CCT	3000K/4000K/5000K/5700K/6500K					
CRI	Ra>80(70,90 Optional)					
PF	0.95					
Beam Angle	25°/45°/60°/90°					
IP Rating	IP66					
IK Rating	IK08					
Warranty	5 Years					
Life Span	50,000Hrs					
Working Temperature	-35°C- +50°C					
Dimmension(mm)	300*250*120mm	460*300*150mm	670*300*150mm	560*460*150mm	670*560*200mm	880*560*200mm
Certification	ETL/CQC/CB/CE/ENEC/SAA/FCC/RoHS					

Disclaimer:
Technical data is subject to change without prior notice.

SKYWING SF02

Sports & High Mast Light

High wattage from 250W to 1250W
Light efficiency up to 140lm/W
High strength polycarbonate lens, optical lighting distribution:25°/45°/60°/90°
Cold forging technology with al1070, thermal conductivity 236w/m*25 C
Integrated copper breather valve, balance internal and external temperature and humidity
Extrusion aluminum frame, high mechanical strength and excellent thermal management
4mm thickness U shape bracket: High-strength cold-rolled plate designwith integral flanging and bending, light weight, high mechanical strength, Special corrosion treatment to reach the WF2 standard.
Racked angle allows for precise installation, Up to 270°
Top brand LED chip and driver, ensure the product quality and lifetime
Ingress protection: IP66 waterproof
Double surge protection: Driver & extra 10KV SPD

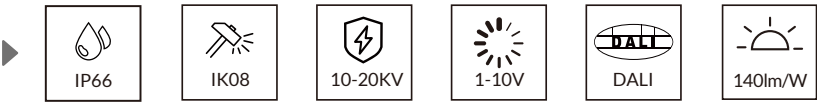


Features:

· Square floodlight.



· Racked Angle allows for prcise Installation, up to 270°



Technical specification:

Model No.	ISL-QCD-B400W	ISL-QCD-B500W	ISL-QCD-B800W	ISL-QCD-1000W	ISL-QCD-B1200W	ISL-QCD-B1500W
Power	400W	500W	800W	1000W	1200W	1500W
Input Voltage	AC100-277V; 50/60Hz					
Lumen EFF	140LM/W (±5%)					
LED Brand	LUMILEDS 3030					
Driver Brand	MEANWELL / SOSEN /INVENTRONICS					
CCT	3000K/4000K/5000K/5700K/6500K					
CRI	Ra>80(70,90 Optional)					
PF	0.95					
Beam Angle	25°/45°/60°/90°					
IP Rating	IP66					
IK Rating	IK08					
Warranty	5 Years					
Life Span	50,000Hrs					
Working Temperature	-35°C- +50°C					
Dimmension(mm)	325*472*160mm		629*536*160mm		890*536*160mm	
Certification	ETL/CQC/CB/CE/ENEC/SAA/FCC/RoHS					

Disclaimer:
Technical data is subject to change without prior notice.

SKYWING SF03

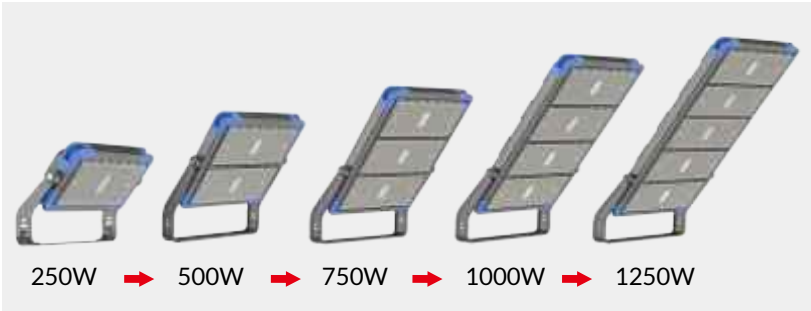
Sports & High Mast Light

High wattage from 250W to 1250W
Light efficiency up to 140lm/W
High strength polycarbonate lens, optical lighting distribution: 10°/ 25°/ 45°/ 60°/ 90°/ 130°30°60°/ 65°25°60°/90°30°60°
Blue corner: Unique appearance and increases industrial look
Modular design: Easy to assemble and disassemble, facilitate customer inventory and fast delivery to project
Rotatable module: Each module can be rotated by ± 30°
Die casting heat sink: Excellent thermal management & Compact structure
Racked angle: Allows for precise installation, up to 270°
Integrated breather valve: Balances the internal & external temperature & humidity
4mm thickness U shape bracket: High-strength cold-rolled plate designwith integral flanging and bending, light weight, high mechanical strength, Special corrosion treatment to reach the WF2 standard.
Top brand LED chip and driver, ensure the product quality and lifetime
Ingress protection: IP66 waterproof
Double surge protection: Driver & extra 10KV SPD
Options: Spill shield to reduce the light pollution

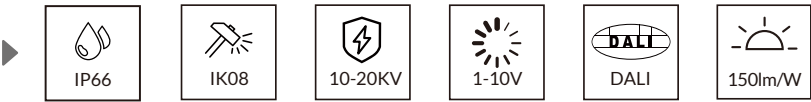


Features:

· Modular design,
250W/500W/750W/1000W/1250W available.



· Replaceable Module Fixtures



· Replace Guide:



Remove the screws and open the buckle



Remove the defective module



Replace new module



Adjust the module angle: ±30°

Technical specification:

Model No.	ISL-QCD-C250W	ISL-QCD-C500W	ISL-QCD-C750W	ISL-QCD-C1000W	ISL-QCD-C1250W
Power	240W	480W	720W	960W	1200W
Input Voltage	AC100-277V; 50/60Hz				
Lumen EFF	150LM/W (±5%)				
LED Brand	LUMILEDS 3030 / OSRAM 3737				
Driver Brand	MEANWELL / SOSEN / INVENTRONICS				
CCT	3000K/4000K/5000K/5700K/6500K				
CRI	Ra>80(70,90 Optional)				
PF	0.95				
Beam Angle	10°/25°/45°/60°/90°/120°30°60°/65°25°60°/90°30°60°				
IP Rating	IP66				
IK Rating	IK08				
Warranty	5 Years				
Life Span	50,000Hrs				
Working Temperature	-35°C- +50°C				
Dimmension(mm)	462*222*111mm	462*399*111mm	462*584*111mm	462*761*111mm	502*1072*307mm
Certification	ETL/CQC/CB/CE/ENEC/SAA/FCC/RoHS				

Disclaimer:
Technical data is subject to change without prior notice.

SKYWING SF04

Sports & High Mast Light

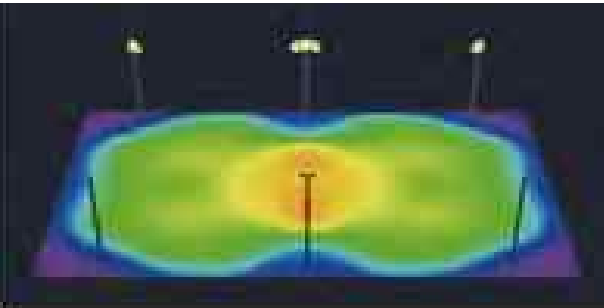
High wattage from 400W to 1200W
Light efficiency up to 140lm/W
High strength polycarbonate lens, optical lighting distribution: 10°/ 25°/ 45°/ 60°/ 90°
Integrated die casting heat sink: Excellent thermal management & compact structure
Die-casting aluminum arm & bracket: Anti-typhoon 17 & high corrosion resistance for coastal area
Integrated breather valve: Balance the internal & external temperature and humidity
Top brand LED chip and driver, ensure the product quality and lifetime
Ingress protection: IP66 waterproof
Double surge protection: Driver & extra 10KV SPD

Features:

· Round shape floodlight.



· 400W/1200W with narrow beam angles are available to maximize light while controlling uniformity and glare.



Technical specification:

Model No.	ISL-QCD-D400W	ISL-QCD-D500W	ISL-QCD-D600W	ISL-QCD-D800W	ISL-QCD-D1000W	ISL-QCD-D1200W
Power	400W	500W	600W	800W	1000W	1200W
Input Voltage	AC100-277V; 50/60Hz					
Lumen EFF	150LM/W (±5%)					
LED Brand	LUMILEDS 3030 / OSRAM 3737					
Driver Brand	MEANWELL / SOSEN /INVENTRONICS					
CCT	3000K/4000K/5000K/5700K/6500K					
CRI	Ra>80(70,90 Optional)					
PF	0.95					
Beam Angle	10°/25°/45°/60°/90°					
IP Rating	IP66					
IK Rating	IK08					
Warranty	5 Years					
Life Span	50,000Hrs					
Working Temperature	-35°C- +50°C					
Dimmension(mm)	493*439*421mm			651*586*511mm		
Certification	UL/ETL/CQC/CB/CE/ENEC/SAA/FCC/RoHS					

Disclaimer:
Technical data is subject to change without prior notice.



SKYWING SF05

Sports & High Mast Light

High wattage from 120W to 1200W
Light efficiency up to 140lm/W, 160lm/W, 180lm/W
Single module 120W/ 150W/ 200W, up to 6 modules can be combined into 1200W
High strength polycarbonate lens, optical lighting distribution: 30°/ 45°/ 60°/ 90°/ 80°140°/ 120°30°60°
Die casting heat sink: Excellent thermal management & Compact structure
Embedded cable raceway: Optimize cable layout
Racked angle: Allows for precise installation, up to 270°
4mm thickness U shape bracket: High-strength cold-rolled plate designwith integral flanging and bending, light weight, high mechanical strength, Special corrosion treatment to reach the WF2 standard.
Integrated breather valve: Balances the internal & external temperature & humidity
Tempered glass cover option: To apply in harsh conditions
Top brand LED chip and driver, ensure the product quality and lifetime
Ingress protection: IP66 waterproof
Double surge protection: Driver & extra 10KV SPD

Features:

· Combination floodlight.




· Options: Tempering Glass for Harsh Environment.
PC lens and Glass for double protection.



IP66

IK08

10-20KV

1-10V

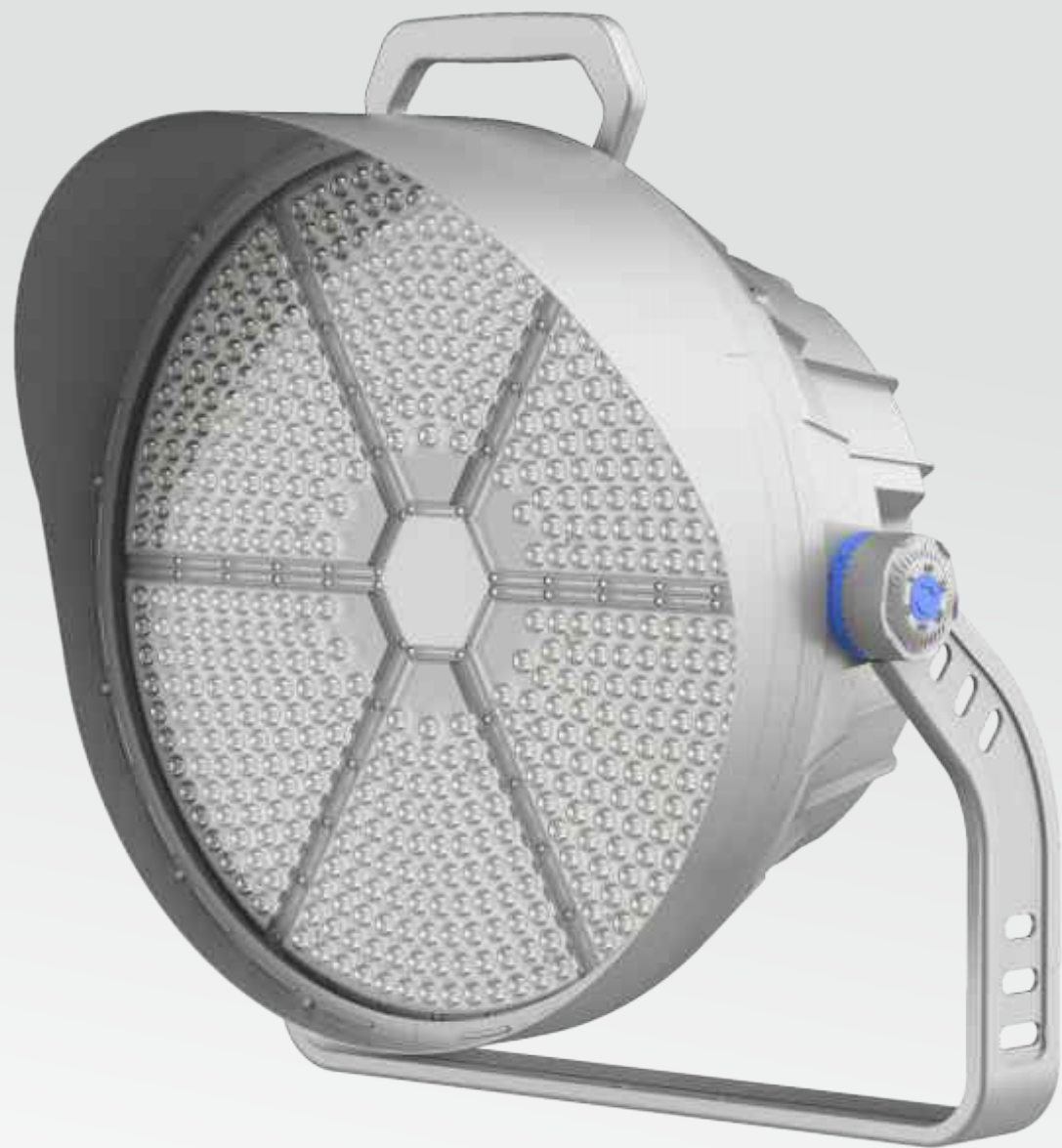
DALI

150lm/W

Technical specification:

Model No.	ISL-QCD-E200W	ISL-QCD-E400W	ISL-QCD-E600W	ISL-QCD-E800W	ISL-QCD-E1000W	ISL-QCD-E1200W
Power	200W	400W	600W	800W	1000W	1200W
Input Voltage	AC100-277V; 50/60Hz					
Lumen EFF	150LM/W (±5%)					
LED Brand	LUMILEDS 3030 / LUMILEDS 5050					
Driver Brand	MEANWELL / SOSEN /INVENTRONICS					
CCT	3000K/4000K/5000K/5700K/6500K					
CRI	Ra>80(70,90 Optional)					
PF	0.95					
Beam Angle	30°/45°/60°/90°/120°40°60°/80°140°					
IP Rating	IP66					
IK Rating	IK08					
Warranty	5 Years					
Life Span	50,000Hrs					
Working Temperature	-35°C- +50°C					
Dimmension(mm)	150*490*140mm	315*490*155mm	428*490*155mm	555*490*155mm	668*490*155mm	776*490*155mm
Certification	UL/CQC/CB/CE/ENEC/SAA/FCC/RoHS					

Disclaimer:
Technical data is subject to change without prior notice.



SKYWING SF06

Sports & High Mast Light

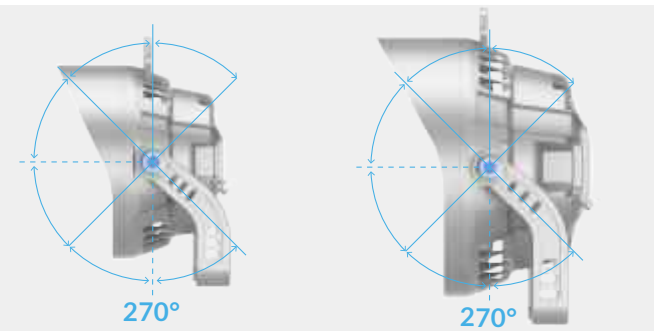
High wattage from 400W to 1200W
Light efficiency up to 150lm/W
High strength polycarbonate lens, optical lighting distribution: 10°/ 15°/ 25°/ 45°/ 60°/ 90°
ADC12 die-casting heat sink: Excellent thermal management & compact structure
4mm thickness U shape bracket: High-strength cold-rolled plate designwith integral flanging and bending, light weight, high mechanical strength, Special corrosion treatment to reach the WF2 standard.
Integrated breather valve: Balance the internal & external temperature and humidity
Top brand LED chip and driver, ensure the product quality and lifetime
Ingress protection: IP66 waterproof
Double surge protection: Driver & extra 10KV SPD
Tempered glass cover option: To apply in harsh conditions

Features:

· Tempering Glass for Harsh Environment.



· Racked Angle allows for prcise installation, up to 270°.



Technical specification:

Model No.	ISL-SF06-A-400W	ISL-SF06-A-500W	ISL-SF06-A-600W	ISL-SF06-A-800W	ISL-SF06-A-1000W	ISL-SF06-A-1200W
Power	400W	500W	600W	800W	1000W	1200W
Input Voltage	AC100-277V; 50/60Hz					
Lumen EFF	150LM/W (±5%)					
LED Brand	LUMILEDS 3030 / OSRAM 3737					
Driver Brand	MEANWELL / SOSEN /INVENTRONICS					
CCT	3000K/4000K/5000K/5700K/6500K					
CRI	Ra>80(70,90 Optional)					
PF	0.95					
Beam Angle	10°/15°/25°/45°/60°/90°					
IP Rating	IP66					
IK Rating	IK08					
Warranty	5Years					
Life Span	50,000Hrs					
Working Temperature	-35°C- +50°C					
Dimmension(mm)	522*509*389mm				681*660*497mm	
Certification	UL/CQC/CB/CE/ENEC/SAA/FCC/RoHS					

Disclaimer:
Technical data is subject to change without prior notice.



SKYWING SF07

Sports & High Mast Light

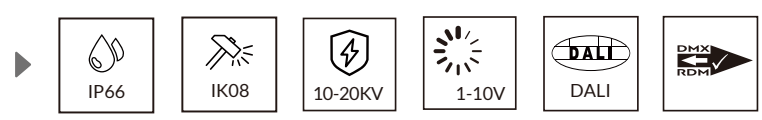
High wattage from 400W to 1800W
Light efficiency up to 150lm/W
High strength polycarbonate lens, optical lighting distribution: 10°/ 25°/ 45°/ 60°/ 90°/ Asymmetrical 60°
Die casting heat sink: Excellent thermal management & Compact structure
Racked angle: Allows for precise installation, up to 270°
4mm thickness U shape bracket: High-strength cold-rolled plate designwith integral flanging and bending, light weight, high mechanical strength,
Special corrosion treatment to reach the WF2 standard.
Integrated breather valve: Balances the internal & external temperature & humidity
Tempered glass cover option: To apply in harsh conditions
Top brand LED chip and driver, ensure the product quality and lifetime
Ingress protection: IP66 waterproof
Double surge protection: Driver & extra 10KV SPD
Options: DALI, DMX

Features:

- Single-piece die-cast housing.
PC lens and Glass for double protection.
Visor options efficiently control the spill light, upward light and avoid the lighting pollution



- Options: Aiming Device for Precision



Technical specification:

Model No.	ISL-QCD-G400W	ISL-QCD-G500W	ISL-QCD-G600W	ISL-QCD-G800W	ISL-QCD-G1000W	ISL-QCD-G1200W	ISL-QCD-G1500W	ISL-QCD-G1800W
Power	400W	500W	600W	800W	1000W	1200W	1500W	1800W
Input Voltage	AC100-277V; 50/60Hz							
Lumen EFF	150LM/W (±5%)							
LED Brand	LUMILEDS 3030 / OSRAM 3737							
Driver Brand	MEANWELL / SOSEN /INVENTRONICS							
CCT	3000K/4000K/5000K/5700K/6500K							
CRI	Ra>80(70,90 Optional)							
PF	0.95							
Beam Angle	10°/25°/45°/60°/90°/Asymmetrical 60°							
IP Rating	IP66							
IK Rating	IK08							
Warranty	5Years							
Life Span	50,000Hrs							
Working Temperature	-35°C- +50°C							
Dimmension(mm)	718*214*222		732*439*290			732*666*290		
Certification	UL/CQC/CB/CE/ENEC/SAA/FCC/RoHS							

Disclaimer:
Technical data is subject to change without prior notice.



SKYWING SF08

Sports & High Mast Light

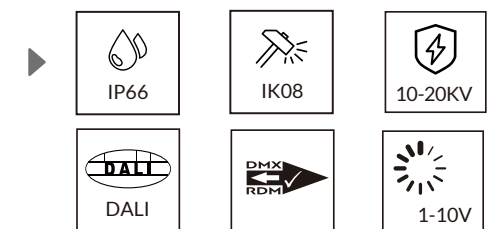
High wattage from 200W to 1500W
 Light efficiency up to 150lm/W
 High strength polycarbonate lens, optical lighting distribution: 10°/ 15°/ 25°/ 45°/ 60°/ 90°
 Integrated die casting heat sink: Excellent thermal management & compact structure
 Module gap design: Reduces wind resistance area and increase heat dissipation performance
 Integrated breather valve: Balance the internal & external temperature and humidity
 4mm thickness U shape bracket: High-strength cold-rolled plate design with integral flanging and bending, light weight, high mechanical strength, Special corrosion treatment to reach the WF2 standard.
 Double surge protection: Driver & extra 10KV SPD
 Options: DALI, DMX

Features:

· Economic/Compact/Linghtweight Solution



· Optional accessories are available



Technical specification:

Model No.	ISL-QCD-H300W	ISL-QCD-H600W	ISL-QCD-H900W	ISL-QCD-H1200W	ISL-QCD-H1500W
Power	240W/300W	480W/600W	720W/900W	960W/1200W	1200W/1500W
Input Voltage	AC100-277V; 50/60Hz				
Lumen EFF	150LM/W (±5%)				
LED Brand	LUMILEDS 2835/ LUMILEDS 3030 / OSRAM 3737				
Driver Brand	MEANWELL / SOSEN /INVENTRONICS				
CCT	3000K/4000K/5000K/5700K/6500K				
CRI	Ra>80(70,90 Optional)				
PF	>0.95				
Beam Angle	10°/15°/25°/45°/60°/90°/Asymmetrical 60°				
IP Rating	IP66				
IK Rating	IK08				
Warranty	5 Years				
Life Span	50,000Hrs				
Working Temperature	-35°C- +50°C				
Dimmension(mm)	560*250*148mm	560*447*148mm	560*447*148mm	560*761*148mm	560*918*148mm
Certification	ETL/CQC/CB/CE/ENEC/SAA/FCC/RoHS				

Disclaimer:
 Technical data is subject to change without prior notice.



SKYWING SF09

High Mast Light

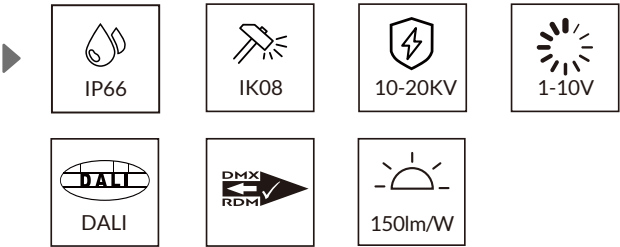
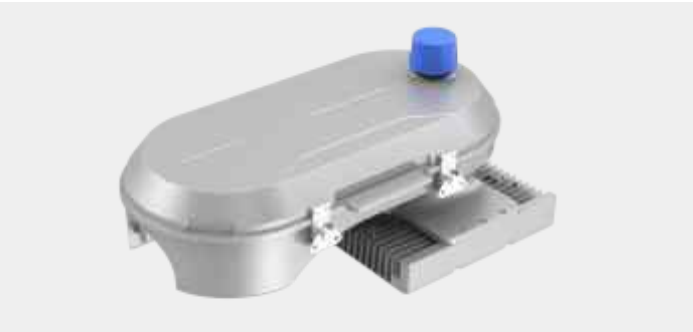
High wattage from 400W to 800W
Light efficiency up to 140lm/W
Optical lighting distribution: 30°/ 45°/ 60°/ 90°/ 140°80°/ ASY60°
Have a patent of appearance and utility model
Sturdy and durable, high light transmittance, strong impact resistance
Convection heat dissipation is good for a longer life
Photocell intelligent control is more cost-saving
Top brand LED chip and driver, ensure the product quality and lifetime
Ingress protection: IP66 waterproof
Double surge protection: Driver & extra 10KV SPD

Features:

· Multiple Power:



· Photocell:



Technical specification:

Model No.	ISL-SF09-A-400W	ISL-SF09-A-600W	ISL-SF09-A-800W
Power	400W	600W	800W
Input Voltage	AC100-277V; 50/60Hz		
Lumen EFF	150LM/W (±5%)		
LED Brand	LUMILEDS 3030		
Driver Brand	MEANWELL / SOSEN /INVENTRONICS		
CCT	3000K/4000K/5000K/5700K/6500K		
CRI	Ra>80(70,90 Optional)		
PF	>0.95		
Beam Angle	30° / 45° / 60° /90° /120°40°60°/80°140°		
IP Rating	IP66		
IK Rating	IK08		
Warranty	5Years		
Life Span	50,000Hrs		
Working Temperature	-35°C- +50°C		
Dimmension(mm)	672*430*304mm	672*430*304mm	728*430*304mm
Certification	CQC/CB/CE/ENEC/SAA/FCC/RoHS		

Disclaimer:
Technical data is subject to change without prior notice.

SKYWING SF10

Sports & High Mast Light

High wattage from 400W to 1350W
Light efficiency up to 150lm/W
Remote control solution: Removeable and remotely mountable power supply box(es) with tool-free access for quick and easy wiring
High strength polycarbonate lens, optical lighting distribution: 10°/ 15°/ 25°/ 45°/ 60°/ 90°
Integrated die casting heat sink: Excellent thermal management & compact structure
4mm thickness U shape bracket: High-strength cold-rolled plate designwith integral flanging and bending, light weight, high mechanical strength, Special corrosion treatment to reach the WF2 standard.
Integrated breather valve: Balance the internal & external temperature and humidity
Tempered glass cover option: To apply in harsh conditions
Top brand LED chip and driver, ensure the product quality and lifetime
Ingress protection: IP66 waterproof
Double surge protection: Driver & extra 10KV SPD
Options: DALI, DMX

Features:

· Multiple Power:



· Driver Options:



Technical specification:

Model No.	ISL-SF10-A-400W	ISL-SF10-A-500W	ISL-SF10-A-600W	ISL-SF10-A-800W	ISL-SF10-A-1000W	ISL-SF10-A-1200W
Power	400W	500W	600W	800W	1000W	1200W
Input Voltage	AC100-277V; 50/60Hz					
Lumen EFF	150LM/W (±5%)					
LED Brand	LUMILEDS 3030 / OSRAM 3737					
Driver Brand	MEANWELL / SOSEN /INVENTRONICS / MOSO					
CCT	3000K/4000K/5000K/5700K/6500K					
CRI	Ra>80(70,90 Optional)					
PF	0.95					
Beam Angle	10°/15°/25°/45°/60°/90°					
IP Rating	IP66					
IK Rating	IK08					
Warranty	5Years					
Life Span	50,000Hrs					
Working Temperature	-35°C- +50°C					
Dimmension(mm)	521*511*394mm			680*660*439mm		
Certification	UL/CQC/TUV/CB/CE/ENEC/SAA/FCC/RoHS					

Disclaimer:
Technical data is subject to change without prior notice.



SKYWING SF11

Sports & High Mast Light

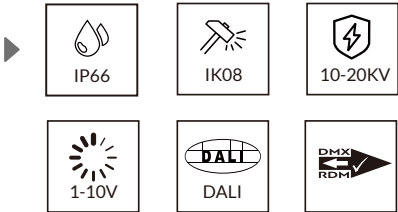
High wattage from 400W to 2400W
Light efficiency up to 150lm/W
High strength polycarbonate lens, optical lighting distribution: 10°/ 15°/ 25°/ 45°/ 60°/ 90°/ ASY60°
Die casting heat sink: Excellent thermal management & Compact structure
Racked angle: Allows for precise installation, up to 270°
4mm thickness U shape bracket: High-strength cold-rolled plate designwith integral flanging and bending, light weight, high mechanical strength, Special corrosion treatment to reach the WF2 standard.
Module gap design: Reduces wind resistance area and increase heat dissipation performance
Integrated breather valve: Balance the internal & external temperature and humidity
Tempered glass to apply in harsh conditions
Top brand LED chip and driver, ensure the product quality and lifetime
Ingress protection: IP66 waterproof
Double surge protection: Driver & extra 10KV SPD
Options: DALI, DMX

Features:

· Multiple Power:



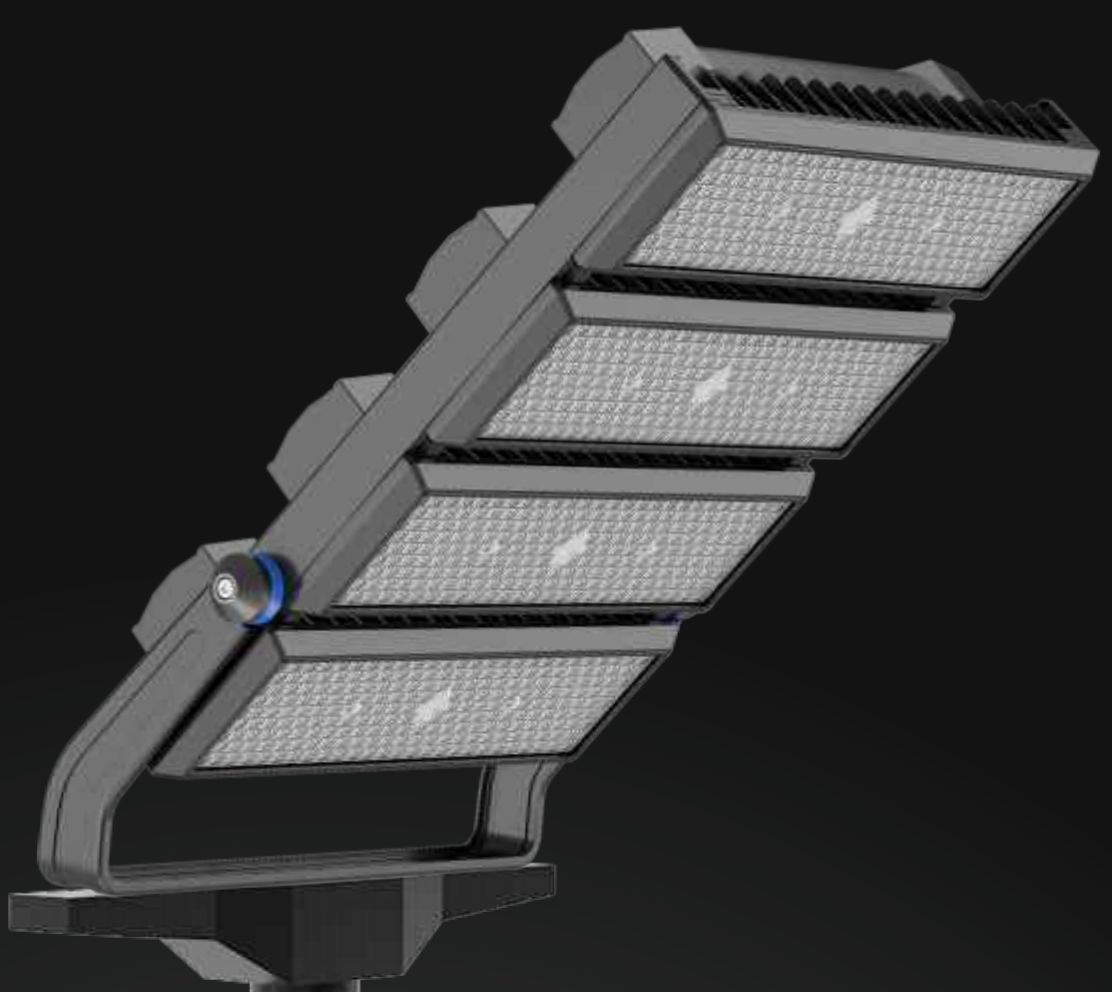
· Driver Options:



Technical specification:

Model No.	ISL-SF11-A-400W	ISL-SF11-A-500W	ISL-SF11-A-600W	ISL-SF11-A-800W	ISL-SF11-A-1000W	ISL-SF11-A-1200W	ISL-SF11-A-1500W	ISL-SF11-A-1800W	ISL-SF11-A-2000W	ISL-SF11-A-2400W
Power	400W	500W	600W	800W	1000W	1200W	1500W	1800W	2000W	2400W
Input Voltage	AC100-277V; 50/60Hz									
Lumen EFF	150LM/W (±5%)									
LED Brand	LUMILEDS 3030 / OSRAM 3737									
Driver Brand	MEANWELL / SOSEN /INVENTRONICS / MOSO									
CCT	3000K/4000K/5000K/5700K/6500K									
CRI	Ra>80(70,90 Optional)									
PF	0.95									
Beam Angle	10°/15°/25°/45°/60°/90°/Asymmetrical 60°									
IP Rating	IP66									
IK Rating	IK08									
Warranty	5Years									
Life Span	50,000Hrs									
Working Temperature	-35°C- +50°C									
Dimmension(mm)	775*290*230mm			775*420*393mm			775*535*547mm		775*613*717mm	
Certification	UL/CQC/CB/CE/ENEC/SAA/FCC/RoHS									

Disclaimer:
Technical data is subject to change without prior notice.



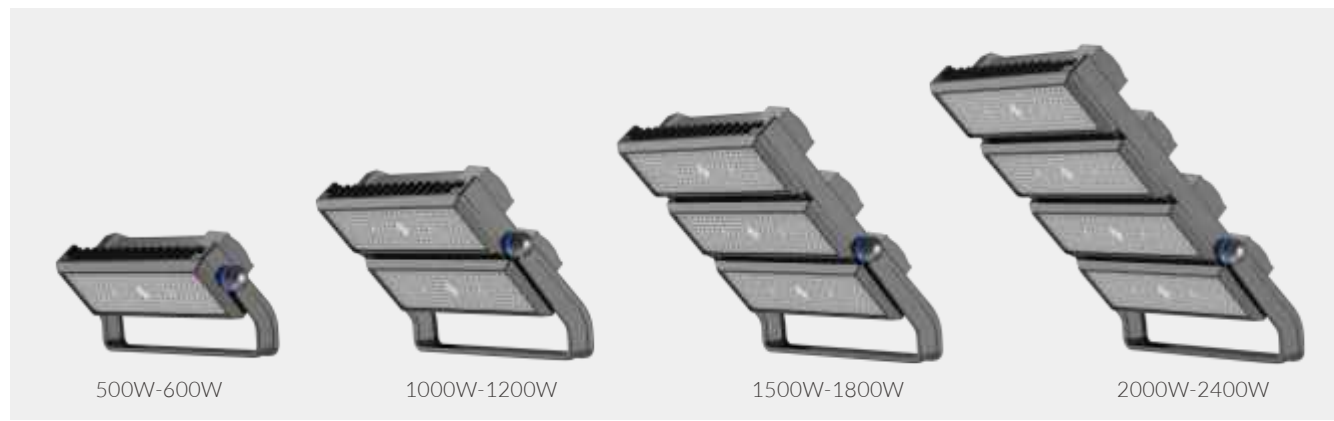
SKYWING SF12

Sports & High Mast Light

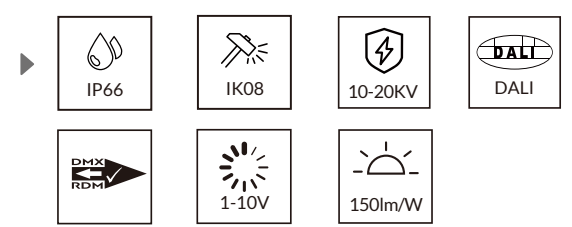
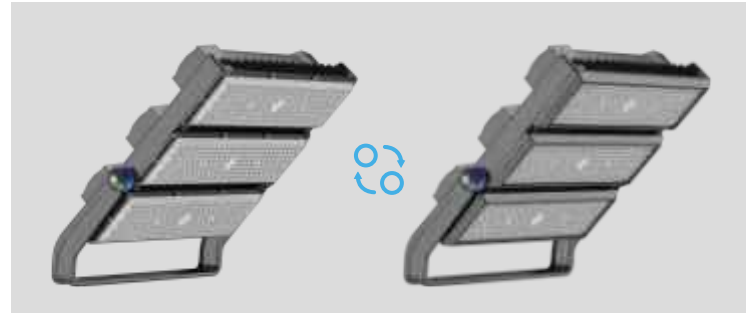
High wattage from 400W to 2000W
Light efficiency up to 150lm/W
High strength polycarbonate lens, optical lighting distribution: 10°/ 25°/ 45°/ 60°/ 90°/ Asymmetrical 60°
Die casting heat sink: Excellent thermal management & Compact structure
Racked angle: Allows for precise installation, up to 270°
4mm thickness U shape bracket: High-strength cold-rolled plate designwith integral flanging and bending, light weight, high mechanical strength, Special corrosion treatment to reach the WF2 standard.
Integrated breather valve: Balances the internal & external temperature & humidity
Top brand LED chip and driver, ensure the product quality and lifetime
Ingress protection: IP66 waterproof
Double surge protection: Driver & extra 10KV SPD
Tempered glass cover option: To apply in harsh conditions
Options: DALI, DMX

Features:

· Combination floodlight.



· Options: Tempering Glass for Harsh Environment.



Technical specification:

Model No.	ISL-SF12-A-500W	ISL-SF12-A-600W	ISL-SF12-A-1000W	ISL-SF12-A-1200W	ISL-SF12-A-1500W	ISL-SF12-A-1800W	ISL-SF12-A-2000W	ISL-SF12-A-2400W
Power	500W	600W	1000W	1200W	1500W	1800W	2000W	2400W
Input Voltage	AC100-277V; 50/60Hz							
Lumen EFF	150LM/W (±5%)							
LED Brand	TD 5050 / OSRAM 3737							
Driver Brand	MEANWELL / SOSEN /INVENTRONICS / MOSO							
CCT	3000K/4000K/5000K/5700K/6500K							
CRI	Ra>80(70,90 Optional)							
PF	>0.95							
Beam Angle	10°/15°/25°/45°/60°/90°/Asymmetrial 60°							
IP Rating	IP66							
IK Rating	IK08							
Warranty	5 Years							
Life Span	50,000Hrs							
Working Temperature	-35°C- +50°C							
Dimmension(mm)	775*290*230mm		775*420*393mm		775*535*547mm		775*613*717mm	
Certification	CQC/TUV/CB/CE/ENEC/SAA/FCC/RoHS							

Disclaimer:
Technical data is subject to change without prior notice.

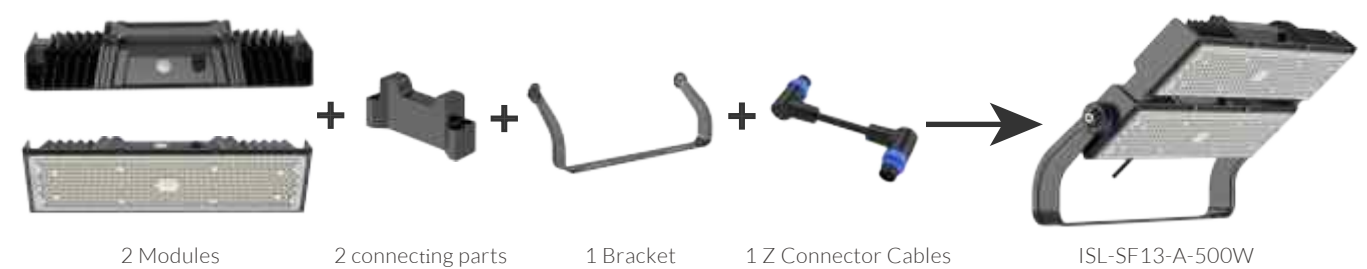
SKYWING SF13

Sports & High Mast Light

High wattage from 250W to 1250W
Light efficiency up to 150lm/W
Easy assembly & SKD solution available
Power adjustable for each module I=240W, II=200W, III=150W
High strength polycarbonate lens, optical lighting distribution: 10°, 15°, 25°, 45°, 60°, 90°, 65°25°60°
ADC12 aluminum die-casting fixture housing,concise appearance, excellent thermal management & compact structure
4mm thickness U shape bracket: High-strength cold-rolled plate design with integral flanging and bending, light weight, high mechanical strength, Special corrosion treatment to reach the WF2 standard.
Top brand led chip and driver, ensure the product quality and lifetime
Ingress protection: Ip66 waterproof
Double surge protection: Driver & extra 10KV SPD

Features:

· Easy Assembly & SKD Solution



· Power Adjustable Solution:

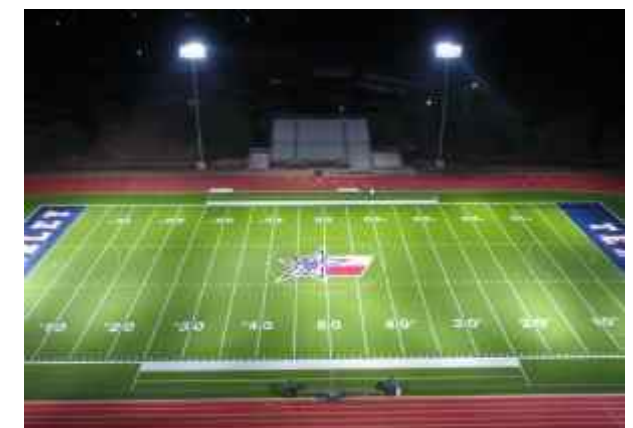


Power Adjustable

Power I=240W(100%)

Power II=200W(75%)

Power III=150W(50%)



Technical specification:

Model No.	ISL-SF13-A-250W	ISL-SF13-A-500W	ISL-SF13-A-750W	ISL-SF13-A-1000W	ISL-SF13-A-1250W
Power	240W-200W-150W	480W-400W-300W	720W-600W-450W	960W-800W-600W	1200W-1000W-750W
Input Voltage	AC100-277V; 50/60Hz				
Lumen EFF	150LM/W (±5%)				
LED Brand	LUMILEDS 2835 / OSRAM 3737				
Driver Brand	SOSEN				
CCT	3000K/4000K/5000K/5700K/6500K				
CRI	Ra>80(70,90 Optional)				
PF	0.95				
Beam Angle	10°/15°/25°/45°/60°/90°/65°25°				
IP Rating	IP66				
IK Rating	IK08				
Warranty	5 Years				
Life Span	50,000Hrs				
Working Temperature	-35°C- +45°C				
Dimmension(mm)	558*293*93mm	558*457*93mm	558*621*93mm	558*784*93mm	558*948*93mm
Certification	CQC/TUV/CB/CE/ENEC/SAA/FCC/RoHS				

Disclaimer:
Technical data is subject to change without prior notice.

NOVA

Modular Light

Tunnels are pivotal components of modern transportation networks, offering streamlined passageways for both vehicles and pedestrians. Among the measures to ensure the safety and optimal operation of tunnels, proper lighting stands out as a key element. Opting for tunnel - specific lighting solutions, crafted to meet high safety and efficiency standards, significantly improves visibility and helps prevent accidents.



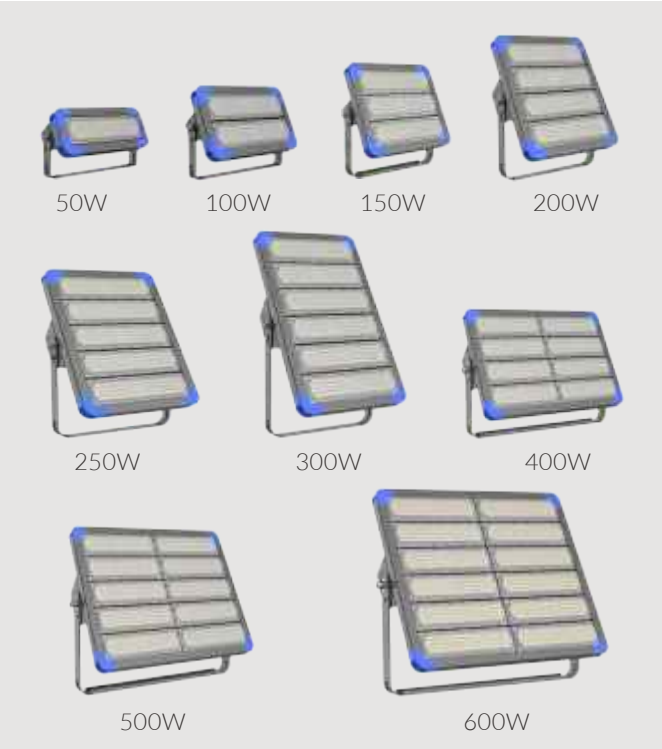
NOVA MFL01

Modular Flood Light

Offered in 50W to 600W
Light efficiency up to 140lm/W
Extrusion technology: Al6063 provide the heat sink with excellent thermal management
Blue corner: Unique appearance and increases industrial look
Integrated breather valve: Balance the internal & external pressure, humidity and temperature
Galvanized steel bracket: High corrosion resistance, rotatable up to 180°
Optical lighting distribution: Symmetrical: 15°/ 25°/ 45°/ 60°/90°, asymmetrical: 20°50°/ 30°70°/ 80°140°
Top brand LED chip and driver, ensure the product quality and lifetime
Ingress Protection Rating: IP66

Features:

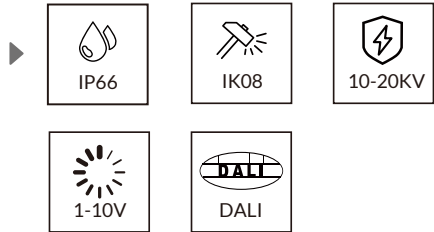
- Multiple Power:
Module splicing single module 50W maximum splicing 600W



- Installation method



NOVA Modular Light



Technical specification:

Model No.	ISL-SDD-50W	ISL-SDD-100W	ISL-SDD-150W	ISL-SDD-200W	ISL-SDD-250W	ISL-SDD-300W	ISL-SDD-400W	ISL-SDD-500W	ISL-SDD-600W
Power	50W	100W	150W	200W	250W	1200W	400W	500W	600W
Input Voltage	AC100-277V; 50/60Hz								
Lumen EFF	140LM/W (±5%)								
LED Brand	LUMILEDS 3030								
Driver Brand	MEANWELL / SOSEN								
CCT	3000K/4000K/5000K/5700K/6500K								
CRI	Ra>80(70,90 Optional)								
PF	0.95								
Beam Angle	15°/25°/45°/60°/90°/140°80°/30°70°/21°49°								
IP Rating	IP66								
IK Rating	IK08								
Warranty	5Years								
Life Span	50,000Hrs								
Working Temperature	-35°C- +50°C								
Dimmension(mm)	310*87*170mm	310*87*228mm	310*87*309mm	310*87*382mm	310*87*459mm	310*87*539mm	571*107*388mm	571*107*461mm	571*107*529mm
Certification	ETL/CQC/CB/CE/ENEC/SAA/FCC/RoHS								

Disclaimer:
Technical data is subject to change without prior notice.

NOVA MFL02

Modular Flood Light

Offered in 50W to 500W
Light efficiency up to 140lm/W
Die casting heat sink: Excellent thermal management & compact structure
Embedded cable raceway: Optimized cable layout
Racked angle, angle adjustable 180, achieving precise installation
4mm thickness U shape bracket: High-strength cold-rolled plate designwith integral flanging and bending, light weight, high mechanical strength,
Special corrosion treatment to reach the WF2 standard.
Glass cover option: Can be applied in harsh environment
Top brand LED chip and driver, ensure the product quality and lifetime
Optional polycarbonate lenses provide high impact resistance IK08, light transmittance up to 94%
and multiple lighting distributions: 25°/45°/60°/90°/90°120°/80°150°
Ingress protection rating: IP66

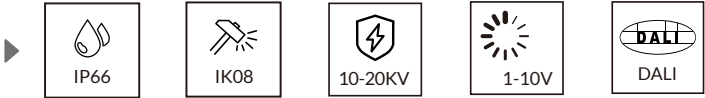
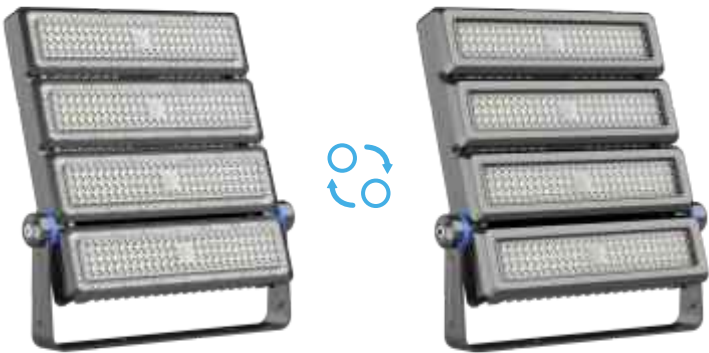


Features:

· Multiple Power:



· Options: Tempering Glass for Harsh Environment.
PC lens and Glass for double protection.



Technical specification:

Model No.	ISL-SDD-B50W	ISL-SDD-B100W	ISL-SDD-B150W	ISL-SDD-B200W	ISL-SDD-B250W	ISL-SDD-B400W	ISL-SDD-B500W
Power	50W	100W	150W	200W	250W	400W	500W
Input Voltage	AC100-277V; 50/60Hz						
Lumen EFF	140LM/W (±5%)						
LED Brand	LUMILEDS 2835						
Driver Brand	MEANWELL / SOSEN						
CCT	3000K/4000K/5000K/5700K/6500K						
CRI	Ra>80(70,90 Optional)						
PF	0.95						
Beam Angle	25°/45°/60°/90°/90°120°/80°150°						
IP Rating	IP66						
IK Rating	IK08						
Warranty	5 Years						
Life Span	50,000Hrs						
Working Temperature	-35°C- +50°C						
Dimmension(mm)	133*372*97mm	220*372*97mm	310*372*97mm	398*372*97mm	486*372*97mm	398*690*97mm	486*690*97mm
Certification	ETL/CQC/CB/CE/ENEC/SAA/FCC/RoHS						

Disclaimer:
Technical data is subject to change without prior notice.

NOVA MFL03

Modular Flood Light

Offered in 50W to 250W
Light efficiency up to 140lm/W
Die casting heat sink: Excellent thermal management & compact structure
Racked angle, angle adjustable 180, achieving precise installation
Top brand LED chip and driver, ensure the product quality and lifetime
Optional polycarbonate lenses provide high impact resistance IK08, light transmittance up to 94% and multiple lighting distributions: 25°/45°/60°/90°/90°120°/80°150°
4mm thickness U shape bracket
Ingress protection rating: IP66

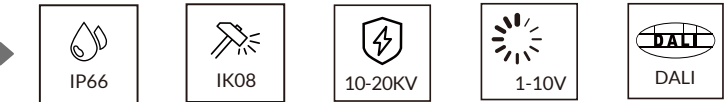


Features:

- Multiple Power:
Economic / Compact / Lightweight / Cost-efficient Solution



- Options: Driver Box for Double protection



Technical specification:

Model No.	ISL-MFL03-A-50W	ISL-MFL03-A-100W	ISL-MFL03-A-150W	ISL-MFL03-A-200W	ISL-MFL03-A-250W
Power	50W	100W	150W	200W	250W
Input Voltage	AC100-277V; 50/60Hz				
Lumen EFF	140LM/W (±5%)				
LED Brand	LUMILEDS 2835				
Driver Brand	MEANWELL / MOSO				
CCT	3000K/4000K/5000K/5700K/6500K				
CRI	Ra>80(70,90 Optional)				
PF	0.95				
Beam Angle	25°/45°/60°/90°/90°120°/80°150°				
IP Rating	IP66				
IK Rating	IK08				
Warranty	5 Years				
Life Span	50,000Hrs				
Working Temperature	-35°C- +50°C				
Dimmension(mm)	352*72*88mm	352*151*88mm	352*230*88mm	352*310*88mm	352*390*88mm
Certification	CQC/CB/CE/ENEC/SAA/FCC/RoHS				

Disclaimer:
Technical data is subject to change without prior notice.

DIAMOND

Flood Light

LED floodlights are engineered specifically to illuminate vast indoor and outdoor areas. They feature high-intensity output, expansive coverage, and operate with remarkable energy efficiency, ensuring large spaces are well-lit without consuming excessive power.



DIAMOND FL01

Flood Light

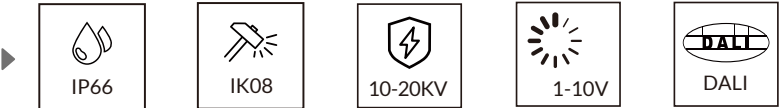
Offered in 10W to 200W
Light efficiency up to 120lm/W
Optical lighting distribution: 120°, 10°/25°/45°/60°/90°/70°/150°
Die-casting technology by ADC12, excellent thermal management, reduce the temperature difference and ensure the lumen depreciation
Tempered glass, Integrated Breather Valve: Balances The Internal & External Temperature and Humidity
Racked Angle ±120° adjustable, Allows For Precise Installation
Ingress Protection Rating: IP66

Features:

· Slim floodlight



· Multi-scene application



Technical specification:

Model No.	ISL-XTGD-10W	ISL-XTGD-20W	ISL-XTGD-30W	ISL-XTGD-50W	ISL-XTGD-100W	ISL-XTGD-150W	ISL-XTGD-200W
Power	10W	20W	30W	50W	100W	1500W	200W
Input Voltage	AC100-277V; 50/60Hz						
Lumen EFF	120LM/W(±5%), 150LM/W (±5%)						
LED Brand	LUMILEDS/SAN'AN						
Driver Brand	MEANWELL /SOSEN / ISHINELUX						
CCT	3000K/4000K/5000K/5700K/6500K						
CRI	Ra>80(70,90 Optional)						
PF	0.95						
Beam Angle	120°, 10°/25°/45°/60°/90°/70°/150°						
IP Rating	IP66						
IK Rating	IK08						
Warranty	5 Years						
Life Span	50,000Hrs						
Working Temperature	-25°C- +45°C						
Dimmension(mm)	129*99*44mm	173*135*44mm	215*175*47mm	275*225*48mm	325*275*53mm	385*305*58mm	435*335*65mm
Certification	ETL/CQC/CB/CE/ENEC/SAA/FCC/RoHS						

Disclaimer:
Technical data is subject to change without prior notice.



DIAMOND FL02

Flood Light

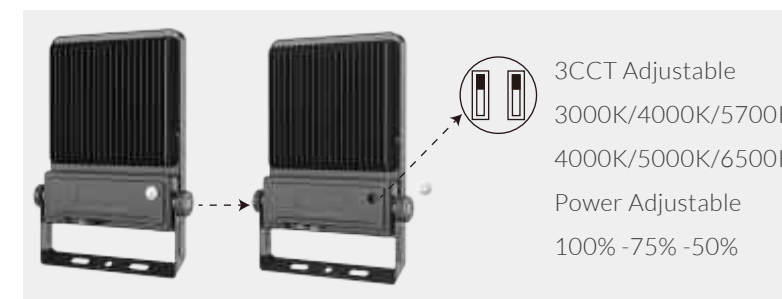
Offered in 10W to 300W
Light efficiency up to 150lm/W
Optical lighting distribution: 120°
Die-casting technology by ADC12, excellent thermal management, reduce the temperature difference and ensure the lumen depreciation
Tempered glass, Integrated Breather Valve: Balances The Internal & External Temperature and Humidity
Offset bracket design, Racked Angle ±120° adjustable, Allows For Precise Installation
Ingress Protection Rating: IP66
Options: 3CCT & 3Power Adjustable
Options: PIR Sensor

Features:

· Multiple Power:



· Options: 3CCT & Power adjustable solution



· Optional sensor model



Technical specification:

Model No.	ISL-TGD-B10W	ISL-TGD-B20W	ISL-TGD-B30W	ISL-TGD-B50W	ISL-TGD-B100W	ISL-TGD-B150W	ISL-TGD-B200W	ISL-TGD-B250W	ISL-TGD-B300W
Power	10W	20W	30W	50W	100W	150W	200W	250W	300W
Input Voltage	AC100-277V; 50/60Hz								
Lumen EFF	120LM/W(±5%), 150LM/W (±5%)								
LED Brand	LUMILEDS								
Driver Brand	MEANWELL / SOSEN / ISHINELUX								
CCT	3000K/4000K/5000K/5700K/6500K/3CCT Adjustable								
CRI	Ra>80(70,90 Optional)								
PF	0.95								
Beam Angle	120°								
IP Rating	IP66								
IK Rating	IK08								
Warranty	5 Years								
Life Span	50,000Hrs								
Working Temperature	-25°C- +45°C								
Dimmension(mm)	127*127*44mm	148*148*44mm	201*193*46mm	247*237*47mm	301*280*55mm	358*320*61mm	412*366*63mm	486*406*69mm	486*406*69mm
Certification	ETL/CQC/CB/CE/ENEC/SAA/FCC/RoHS								

Disclaimer:
Technical data is subject to change without prior notice.

DIAMOND FL02

Flood Light Narrow B

Offered in 10W to 300W
Light efficiency up to 150lm/W
Optical lighting distribution: 25°/45°/60°/90°/70°150°
Die-casting technology by ADC12, excellent thermal management, reduce the temperature difference and ensure the lumen depreciation
Tempered glass, Integrated Breather Valve: Balances The Internal & External Temperature and Humidity
Offset bracket design, Racked Angle ±120° adjustable, Allows For Precise Installation
Ingress Protection Rating: IP66
Options: 3CCT & 3Power Adjustable
Options: PIR Sensor

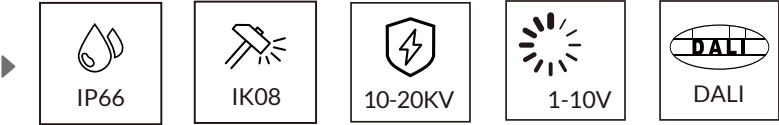
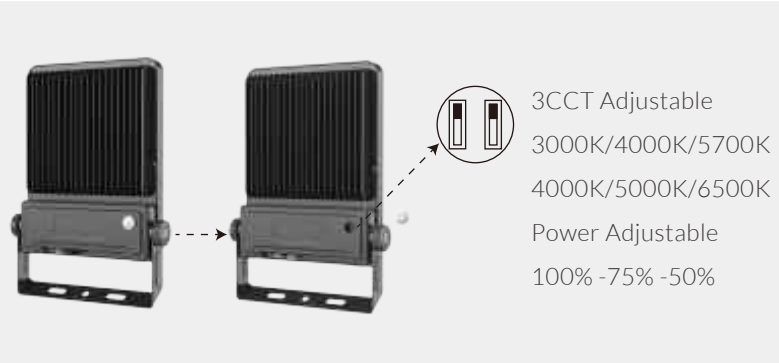


Features:

· Multiple Power:



· Options: 3CCT & Power adjustable solution



Technical specification:

Model No.	ISL-TGD-BB30W	ISL-TGD-BB50W	ISL-TGD-BB100W	ISL-TGD-BB150W	ISL-TGD-BB200W	ISL-TGD-BB250W	ISL-TGD-BB300W
Power	30W	50W	100W	150W	200W	250W	300W
Input Voltage	AC100-277V; 50/60Hz						
Lumen EFF	150LM/W (±5%)						
LED Brand	LUMILEDS						
Driver Brand	MEANWELL /SOSEN						
CCT	3000K/4000K/5000K/5700K/6500K/3CCT Adjustable						
CRI	Ra>80(70,90 Optional)						
PF	0.95						
Beam Angle	25°/45°/60°/90°/70°150°						
IP Rating	IP66						
IK Rating	IK08						
Warranty	5 Years						
Life Span	50,000Hrs						
Working Temperature	-25°C- +45°C						
Dimmension(mm)	201*193*46mm	247*237*47mm	301*280*55mm	358*320*61mm	412*366*63mm	486*406*69mm	486*406*69mm
Certification	ETL/CQC/CB/CE/SAA/FCC/RoHS						

Disclaimer:
Technical data is subject to change without prior notice.



DIAMOND FL03

Flood Light

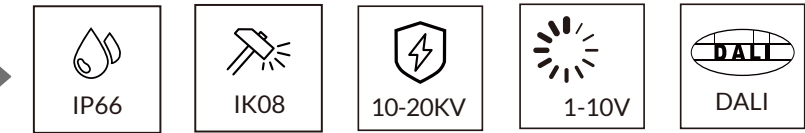
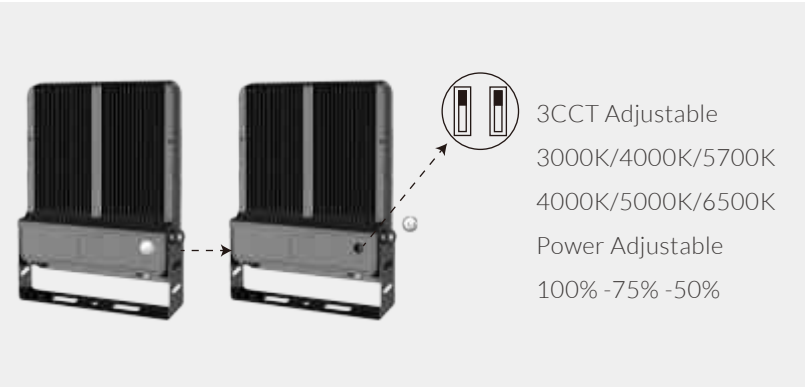
Offered in 30W to 500W
Light efficiency up to 150lm/W
Optical lighting distribution: 120°
Die-casting technology by ADC12, excellent thermal management, reduce the temperature difference and ensure the lumen depreciation
Tempered glass, Integrated Breather Valve: Balances The Internal & External Temperature and Humidity
Offset bracket design, Racked Angle ±120° adjustable, Allows For Precise Installation
Ingress Protection Rating: IP66
Options: 3CCT & 3Power Adjustable

Features:

· Multiple Power:



· Options: 3CCT & Power adjustable solution



Technical specification:

Model No.	ISL-FL03-A-30W	ISL-FL03-A-50W	ISL-FL03-A-100W	ISL-FL03-A-150W	SL-FL03-A-200W	ISL-FL03-A-250W	ISL-FL03-A-300W	ISL-FL03-A-400W	ISL-FL03-A-500W
Power	30W	50W	100W	150W	200W	250W	300W	400W	500W
Input Voltage	AC100-277V; 50/60Hz								
Lumen EFF	120LM/W(±5%), 150LM/W (±5%)								
LED Brand	LUMILEDS								
Driver Brand	MEANWELL/SOSEN/ISHINELUX								
CCT	3000K/4000K/5000K/5700K/6500K/3CCT Adjustable								
CRI	Ra>80(70,90 Optional)								
PF	0.95								
Beam Angle	120°								
IP Rating	IP66								
IK Rating	IK08								
Warranty	5 Years								
Life Span	50,000Hrs								
Working Temperature	-25°C- +45°C								
Dimmension(mm)	217*212*38mm	254*239*38mm	302*314*49mm	358*364*49mm	386*415*51mm	460*480*54mm	460*480*54mm	550*589*56mm	550*589*56mm
Certification	ETL/CQC/CB/CE/ENEC/SAA/FCC/RoHS								

Disclaimer:
Technical data is subject to change without prior notice.

DIAMOND FL03

Flood Light Narrow B

Offered in 30W to 500W
Light efficiency up to 150lm/W
Optical lighting distribution: 25°/45°/60°/90°/70°*150°
Die-casting technology by ADC12, excellent thermal management, reduce the temperature difference and ensure the lumen depreciation
Tempered glass, Integrated Breather Valve: Balances The Internal & External Temperature and Humidity
Offset bracket design, Racked Angle ±120° adjustable, Allows For Precise Installation
Ingress Protection Rating: IP66
Options: 3CCT & 3Power Adjustable

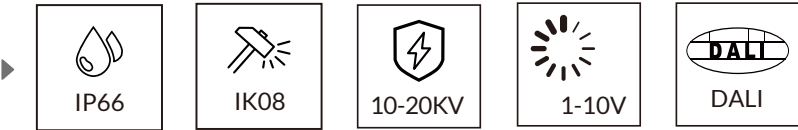
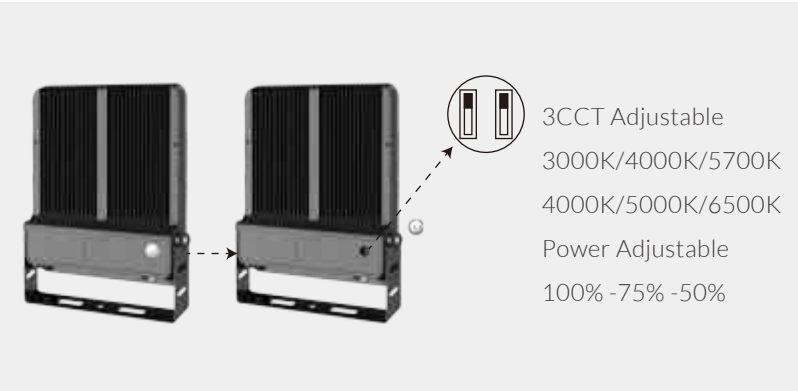


Features:

· Multiple Power:



· Options: 3CCT & Power adjustable solution



DIAMOND Flood Light

Technical specification:

Model No.	ISL-FL03-B-30W	ISL-FL03-B-50W	ISL-FL03-B-100W	ISL-FL03-B-150W	SL-FL03-B-200W	ISL-FL03-B-250W	ISL-FL03-B-300W	ISL-FL03-B-400W	ISL-FL03-B-500W
Power	30W	50W	100W	150W	200W	250W	300W	400W	500W
Input Voltage	AC100-277V; 50/60Hz								
Lumen EFF	150LM/W (±5%)								
LED Brand	LUMILEDS								
Driver Brand	MEANWELL/SOSEN								
CCT	3000K/4000K/5000K/5700K/6500K/3CCT Adjustable								
CRI	Ra>80(70,90 Optional)								
PF	0.95								
Beam Angle	25°/45°/60°/90°/70°*150°								
IP Rating	IP66								
IK Rating	IK08								
Warranty	5 Years								
Life Span	50,000Hrs								
Working Temperature	-25°C- +45°C								
Dimmension(mm)	217*212*38mm	254*239*38mm	302*314*49mm	358*364*49mm	386*415*51mm	460*480*54mm	460*480*54mm	550*589*56mm	550*589*56mm
Certification	ETL/CQC/CB/CE/ENEC/SAA/FCC/RoHS								

Disclaimer:
Technical data is subject to change without prior notice.



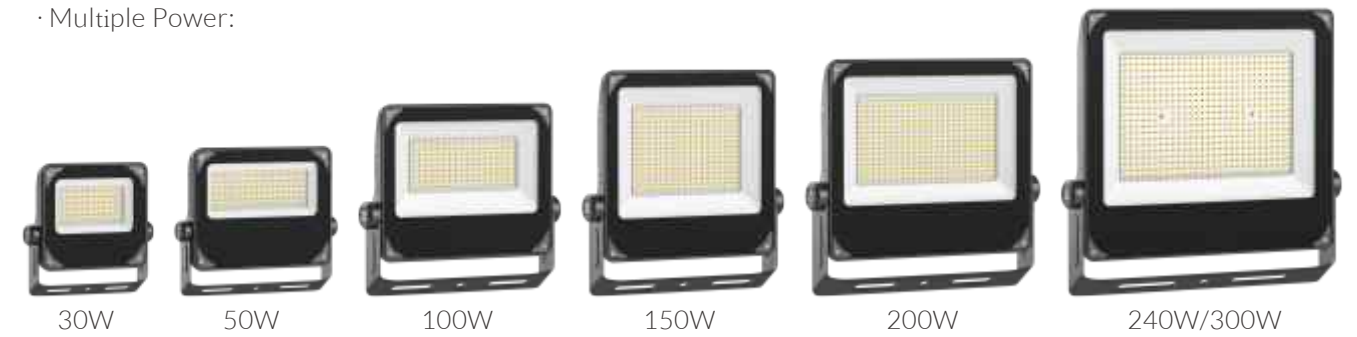
DIAMOND FL04

Flood Light

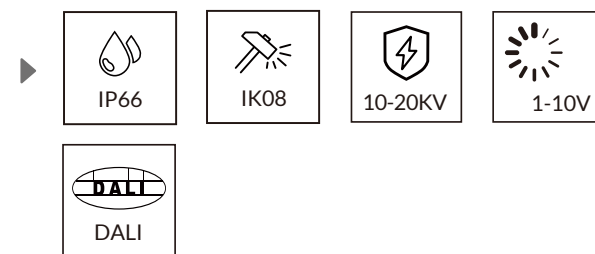
Offered in 30W to 300W
Light efficiency up to 150lm/W
Optical lighting distribution: 120°
Die-casting technology by ADC12, excellent thermal management, reduce the temperature difference and ensure the lumen depreciation
Tempered glass, Integrated Breather Valve: Balances The Internal & External Temperature and Humidity
Offset bracket design, Racked Angle ±120° adjustable, Allows For Precise Installation
Ingress Protection Rating: IP66
Options: 3CCT & 3Power Adjustable

Features:

· Multiple Power:



· Options: 3CCT & Power adjustable solution



Technical specification:

Model No.	ISL-FL04-A-30W	ISL-FL04-A-50W	ISL-FL04-A-100W	ISL-FL04-A-150W	ISL-FL04-A-200W	ISL-FL04-A-250W	ISL-FL04-A-300W
Power	30W	50W	100W	150W	200W	250W	300W
Input Voltage	AC100-277V; 50/60Hz						
Lumen EFF	120LM/W(±5%), 150LM/W (±5%)						
LED Brand	LUMILEDS						
Driver Brand	SOSEN/ ISHINELUX						
CCT	3000K/4000K/5000K/5700K/6500K/3CCT Adjustable						
CRI	Ra>80(70,90 Optional)						
PF	0.95						
Beam Angle	120°						
IP Rating	IP66						
IK Rating	IK08						
Warranty	5 Years						
Life Span	50,000Hrs						
Working Temperature	-25°C- +45°C						
Dimmension(mm)	192*178*38mm	292*198*38mm	299*256*42mm	299*301*42mm	349*308*44mm	420*379*44mm	420*379*44mm
Certification	ETL/CQC/CB/CE/SAA/FCC/RoHS						

Disclaimer:
Technical data is subject to change without prior notice.

DIAMOND FL04

Flood Light Narrow B

Offered in 30W to 300W
Light efficiency up to 150lm/W
Optical lighting distribution: 25°/45°/60°/90°/70°150°
Die-casting technology by ADC12, excellent thermal management, reduce the temperature difference and ensure the lumen depreciation
Tempered glass, Integrated Breather Valve: Balances The Internal & External Temperature and Humidity
Offset bracket design, Racked Angle ±120° adjustable, Allows For Precise Installation
Ingress Protection Rating: IP66
Options: 3CCT & 3Power Adjustable

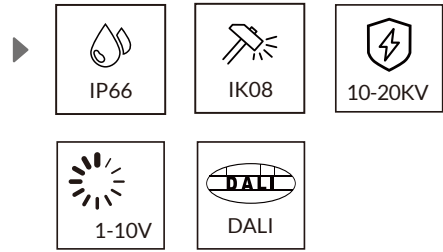
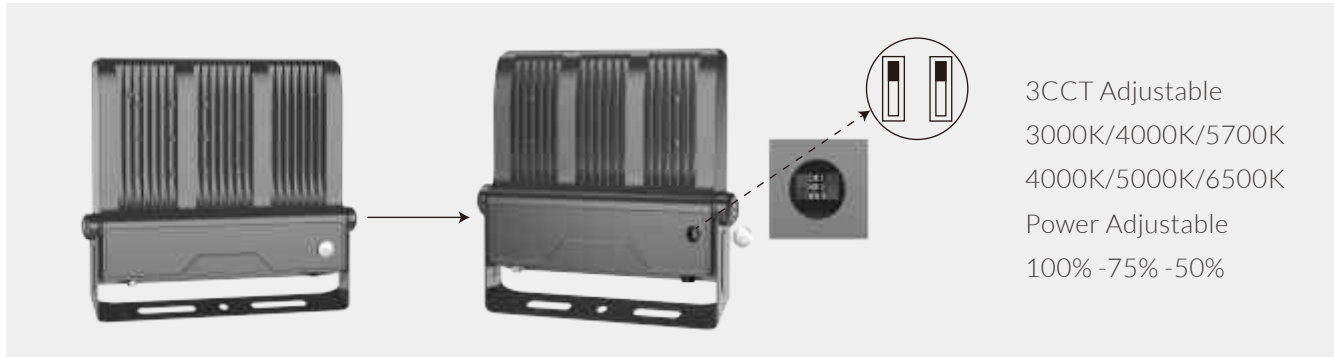


Features:

· Multiple Power:



· Options: 3CCT & Power adjustable solution



Technical specification:

Model No.	ISL-FL04-B-30W	ISL-FL04-B-50W	ISL-FL04-B-100W	ISL-FL04-B-150W	ISL-FL04-B-200W	ISL-FL04-B-250W	ISL-FL04-B-300W
Power	30W	50W	100W	150W	200W	250W	300W
Input Voltage	AC100-277V; 50/60Hz						
Lumen EFF	120LM/W(±5%), 150LM/W (±5%)						
LED Brand	LUMILEDS						
Driver Brand	SOSEN/ ISHINELUX						
CCT	3000K/4000K/5000K/5700K/6500K/3CCT Adjustable						
CRI	Ra>80(70,90 Optional)						
PF	0.95						
Beam Angle	25°/45°/60°/90°/70°150°						
IP Rating	IP66						
IK Rating	IK08						
Warranty	5 Years						
Life Span	50,000Hrs						
Working Temperature	-25°C- +45°C						
Dimmension(mm)	192*178*38mm	292*198*38mm	299*256*42mm	299*301*42mm	349*308*44mm	420*379*44mm	420*379*44mm
Certification	ETL/CQC/CB/CE/SAA/FCC/RoHS						

Disclaimer:
Technical data is subject to change without prior notice.

LEGEND

Street Light

LED street and area lights are available with a diverse range of light distributions. This adaptability makes them suitable for meeting the lighting needs of every outdoor environment. In addition to their versatility, these lights effectively minimize light pollution, contributing to a more sustainable and visually appealing outdoor lighting setup.



Quality, Reliable & Smart Street Light Giving Better View for CITIES

LED street lights are the most energy-efficient and cost-effective lighting solutions for streets and roadways. They offer superior brightness, durability, and longevity compared to traditional light sources. Designed for efficiency and sustainability, our street lights light up cities while reducing energy consumption and carbon emissions.



Making cities live

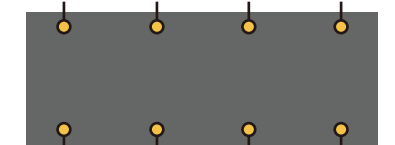
IShineLUX has installed more than 550,000pcs of LED street lights all over the world and is part of smart city & many other prestigious and parking lot projects.

Typical lighting arrangements:

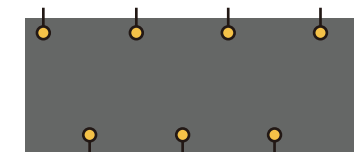
One-sided



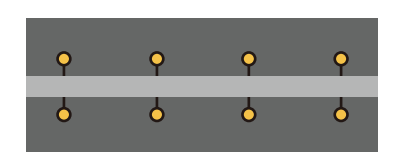
Opposite



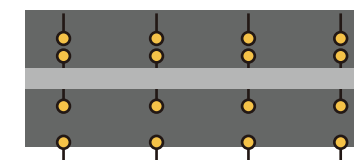
Staggered



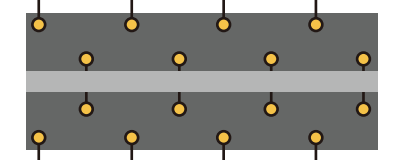
Double davit median



Opposite with double davit median



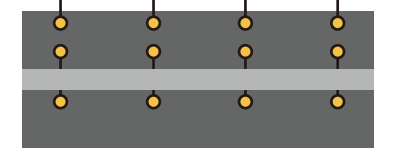
Staggered with double davit median



One-sided with double davit median



One-sided Staggered with double davit median





LEGEND SL02

Street Light

Offered in 30W-240W
Light efficacy up to 140lm/W
Light Distribution: T2-M, T3-M
Opening by two clips, tool-less design
Post top or side entry, -20°-+20° title
Optical lens with tempered glass cover, high anti-corrosion and UV for costal area
Die casting aluminum housing with smooth back cover design, no dust and water will stay on the housing
Top brand LED chip and driver, ensure the product quality and lifetime
Ingress protection: IP66 waterproof
Double surge protection: Driver & extra 10KV SPD



Features:

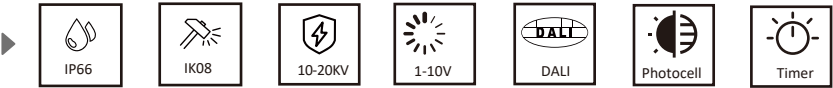
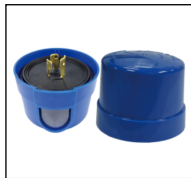
· Multiple Power:



· Tool-free open by buckles, and removeable upper body for easy maintenance.



· Accessories



Technical specification:

Model No.	ISL-LD-B30W	ISL-LD-B50W	ISL-LD-B60W	ISL-LD-B80W	ISL-LD-B100W	ISL-LD-B120W	ISL-LD-B150W	ISL-LD-B180W	ISL-LD-B200W	ISL-LD-B240W
Power	30W	50W	60W	80W	100W	120W	150W	180W	200W	240W
Input Voltage	AC100-277V; 50/60Hz									
Lumen EFF	140LM/W (±5%)									
LED Brand	LUMILEDS									
Driver Brand	MEANWELL /SOSEN									
CCT	3000K/4000K/5000K/5700K/6500K									
CRI	Ra>80(70,90 Optional)									
PF	0.95									
Beam Angle	T2-M/T3-M									
IP Rating	IP66									
IK Rating	IK08									
Warranty	5 Years									
Life Span	50,000Hrs									
Working Temperature	-35°C- +50°C									
Dimmension(mm)	428*208*94mm			519*297*111mm			610*297*111mm		700*297*111mm	
Certification	CQC/TUV/CB/CE/SAA/FCC/RoHS									

Disclaimer:
Technical data is subject to change without prior notice.

LEGEND SL03

Street Light

Offered in 50W-300W
Light efficacy up to 150lm/W
Die-casting technology with ADC12, excellent thermal management
Optical UV resistant PC lens with 94% light transmittance, IK08.
Light Distribution: T2-M, T3-M
Top brand LED chip and driver, ensure the product quality and lifetime
Ingress protection: IP66 waterproof
Double surge protection: Driver & extra 10KV SPD

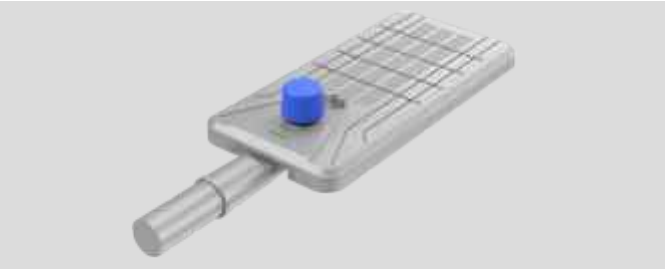


Features:

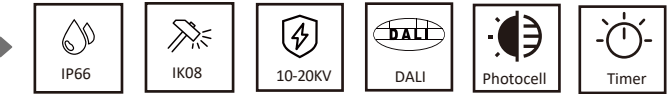
· Multiple Power:



· Tool-free open by buckles, and removeable upper body for easy maintenance.



· Accessories



Technical specification:

Model No.	ISL-LD-C50W	ISL-LD-C100W	ISL-LD-C150W	ISL-LD-C200W	ISL-LD-C250W	SL-LD-C300W
Power	50W	100W	150W	200W	250W	300W
Input Voltage	AC100-277V; 50/60Hz					
Lumen EFF	140LM/W (±5%)					
LED Brand	LUMILEDS					
Driver Brand	SOSEN					
CCT	3000K/4000K/5000K/5700K/6500K					
CRI	Ra>80(70,90 Optional)					
PF	0.95					
Beam Angle	T2-M/T3-M					
IP Rating	IP66					
IK Rating	IK08					
Warranty	5 Years					
Life Span	50,000Hrs					
Working Temperature	-35°C- +50°C					
Dimmension(mm)	483*313*93mm	558*313*93mm	634*313*93mm	709*313*93mm	785*313*93mm	860*313*96mm
Certification	CQC/TUV/CB/CE/SAA/FCC/RoHS					

Disclaimer:
Technical data is subject to change without prior notice.

LEGEND SL05

Street Light

Offered in 50W-240W
Light efficacy up to 140lm/W
Light Distribution: T2-M, T3-M
Optical lens with tempered glass cover, high anti-corrosion and UV for costal area.IK08.
Die-casting technology with ADC12, excellent thermal management
Top brand LED chip and driver, ensure the product quality and lifetime
Ingress protection: IP66 waterproof
Double surge protection: Driver & extra 10KV SPD

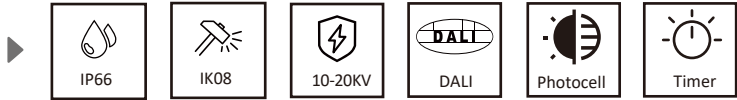


Features:

· 4 Sizes range from 50W to 240W



· Accessories



LEGEND Street Light

Technical specification:

Model No.	ISL-SL05-A-50W	ISL-SL05-A-100W	ISL-SL05-A-150W	ISL-SL05-A-200W	ISL-SL05-A-240W
Power	50W	100W	150W	200W	240W
Input Voltage	AC100-277V; 50/60Hz				
Lumen EFF	140LM/W (±5%)				
LED Brand	LUMILEDS				
Driver Brand	SOSEN				
CCT	3000K/4000K/5000K/5700K/6500K				
CRI	Ra>80(70,90 Optional)				
PF	0.95				
Beam Angle	T2-M/T3-M				
IP Rating	IP66				
IK Rating	IK08				
Warranty	5 Years				
Life Span	50,000Hrs				
Working Temperature	-35°C- +50°C				
Dimmension(mm)	494*170*80mm	589*230*80mm	644*240*80mm	729*292*80mm	729*292*80mm
Certification	CQC/CB/CE/SAA/FCC/RoHS				

Disclaimer:
Technical data is subject to change without prior notice.



LEGEND SL06

Street Light

Offered in 30W-200W
Light efficacy up to 140lm/W
Light Distribution: 70°*140°
Optical UV resistant PC lens with 94% light transmittance, IK08
Die-casting technology with ADC12, excellent thermal management
Lumileds chips, high brightness, low light decay & long lifetime
Ingress protection: IP66 waterproof
Double surge protection: Driver & extra 10KV SPD

Features:

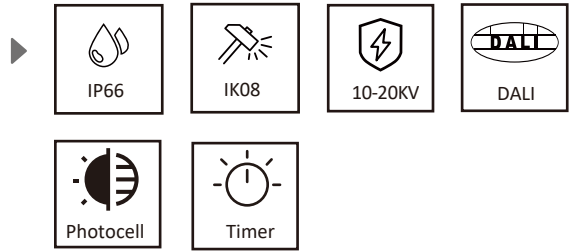
· Application scenarios



· 4 Sizes range from 50W to 240W



· Accessories



Technical specification:

Model No.	ISL-SL06-A-30W	ISL-SL06-A-50W	ISL-SL06-A-100W	ISL-SL06-A-150W	ISL-SL06-A-200W
Power	30W	50W	100W	150W	200W
Input Voltage	AC100-277V; 50/60Hz				
Lumen EFF	140LM/W (±5%)				
LED Brand	LUMILEDS				
Driver Brand	ZH				
CCT	3000K/4000K/5000K/5700K/6500K				
CRI	Ra>80(70,90 Optional)				
PF	0.95				
Beam Angle	70°*140°				
IP Rating	IP66				
IK Rating	IK08				
Warranty	3 or 5 Years				
Life Span	50,000Hrs				
Working Temperature	-35°C- +50°C				
Dimmension(mm)	425*108*96mm	477*138*96mm	566*177*96mm	650*210*96mm	719*244*96mm
Certification	CQC/CB/CE/SAA/FCC/RoHS				

Disclaimer:
Technical data is subject to change without prior notice.

ELEGANT

High Bay Light

High bay lights stand out as highly energy - efficient indoor lighting solutions for large spaces with lofty ceilings. These include industrial plants, where productivity hinges on well - lit workspaces; warehouses, where accurate inventory management requires clear illumination; workshops, facilitating precision tasks; and supermarkets, enhancing the shopping experience.



ELEGANT HB01

High Bay Light

Offered in 100W, 150W and 200W
Up to 150lm/W
Optical UV resistant PC lens with 94% light transmittance, IK08
Optical lighting distribution: 60°/90°/120°
Unique elegant design in appearance, perfectly to replace MH&HPS High Bay
Rotating carving technology with AL1070, excellent thermal management
Integrated AL reflector and optical design, achieves low glare, ideally for supermarket, shopping mall and other commercial applications
Integrated AL reflector saves additional cost and time for projects need reflectors, such as labor cost, installation time
Top brand LED chip and driver, ensure the product quality and lifetime
Ingress protection rating: IP65

Features:

· Multiple Power:



· Accessories



Technical specification:

Model No.	ISL-UFO-A100W	ISL-UFO-A150W	ISL-UFO-A200W
Power	100W	150W	200W
Input Voltage	AC100-277V; 50/60Hz		
Lumen EFF	150LM/W (±5%)		
LED Brand	LUMILEDS		
Driver Brand	MEANWELL / SOSEN		
CCT	3000K/4000K/5000K/5700K/6500K		
CRI	Ra>80(70,90 Optional)		
PF	0.95		
Beam Angle	60°/90°/110°		
IP Rating	IP65		
IK Rating	IK08		
Warranty	5 Years		
Life Span	50,000Hrs		
Working Temperature	-35°C- +50°C		
Dimmension(mm)	290*179mm	340*185mm	360*191mm
Certification	CCC/TUV/CB/CE/SAA/FCC/RoHS		

Disclaimer:
Technical data is subject to change without prior notice.



ELEGANT HB02

High Bay Light

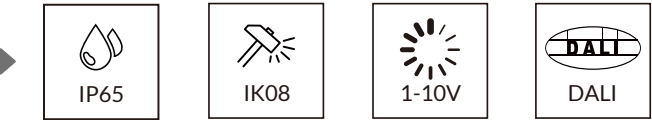
Offered in 100W, 150W, 200W and 240W
Up to 150lm/W
Optical UV resistant PC lens with 94% light transmittance, IK08
Optical lighting distribution: 60°/90°/120°
Die-casting technology with ADC12, excellent thermal management
Top brand LED chip and driver, ensure the product quality and lifetime
Ingress protection rating: IP65

Features:

· Multiple Power:



· Accessories



Technical specification:

Model No.	ISL-UFO-B100W	ISL-UFO-B150W	ISL-UFO-B200W	ISL-UFO-B240W
Power	100W	150W	200W	240W
Input Voltage	AC100-277V; 50/60Hz			
Lumen EFF	150LM/W (±5%)			
LED Brand	LUMILEDS			
Driver Brand	MEANWELL / SOSEN			
CCT	3000K/4000K/5000K/5700K/6500K			
CRI	Ra>80(70,90 Optional)			
PF	0.95			
Beam Angle	60°/90°/110°			
IP Rating	IP65			
IK Rating	IK08			
Warranty	5 Years			
Life Span	50,000Hrs			
Working Temperature	-35°C- +50°C			
Dimmension(mm)	270*130mm	270*130mm	315*168mm	380*136mm
Certification	CCC/TUV/CB/CE/SAA/FCC/RoHS			

Disclaimer:
Technical data is subject to change without prior notice.



ELEGANT HB03

High Bay Light

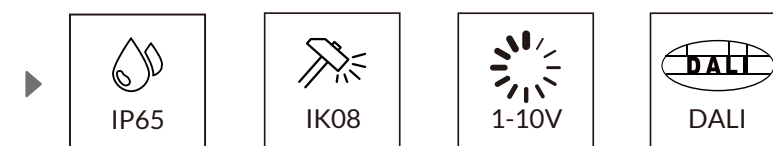
Offered in 100W, 150W and 180W
Up to 150lm/W
Optical UV resistant PC lens with 94% light transmittance, IK08
Optical lighting distribution: 60°/90°/120°
Die-casting technology with ADC12, excellent thermal management
Unique design in appearance, smooth surface, easy for cleaning and can be applied in specific application such as food factories, livestock farms, factories or workshops with heavy dust
Top brand LED chip and driver, ensure the product quality and lifetime
Ingress protection rating: IP65

Features:

· Multiple Power:



· Accessories



ELEGANT High Bay Light

Technical specification:

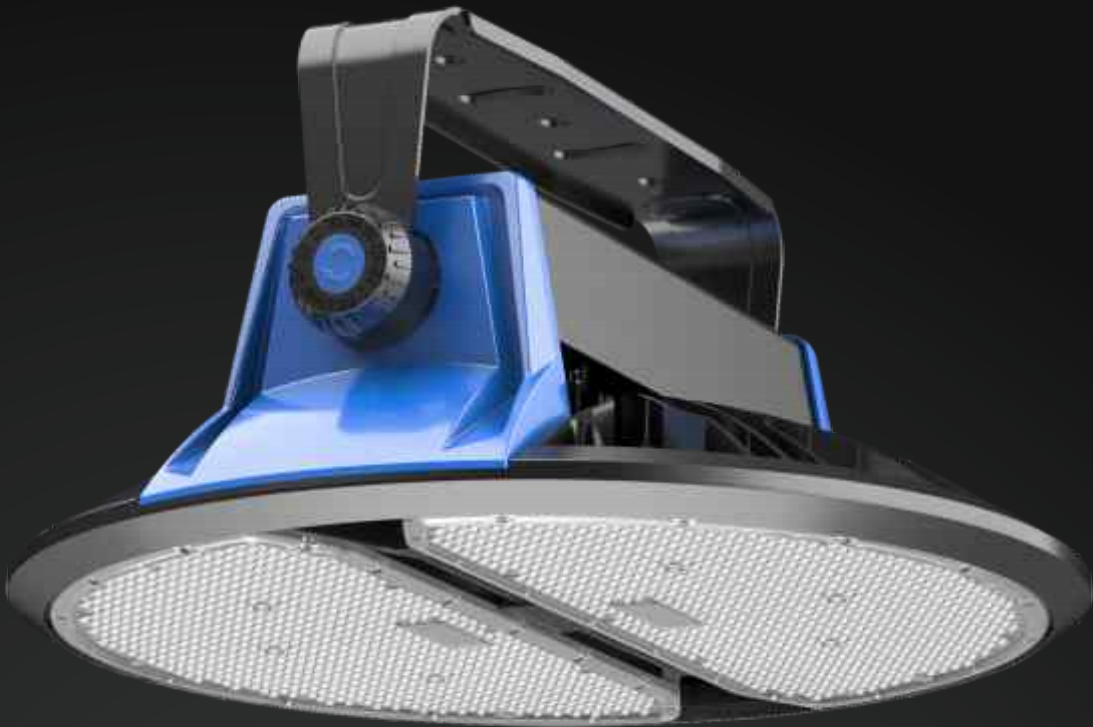
Model No.	ISL-UFO-C100W	ISL-UFO-C150W	ISL-UFO-C180W
Power	100W	150W	180W
Input Voltage	AC100-277V; 50/60Hz		
Lumen EFF	150LM/W (±5%)		
LED Brand	LUMILEDS		
Driver Brand	SOSEN		
CCT	3000K/4000K/5000K/5700K/6500K		
CRI	Ra>80(70,90 Optional)		
PF	0.95		
Beam Angle	60°/90°/110°		
IP Rating	IP65		
IK Rating	IK08		
Warranty	5 Years		
Life Span	50,000Hrs		
Working Temperature	-35°C- +50°C		
Dimmension(mm)	285*155mm	300*172mm	320*192mm
Certification	CCC/CB/CE/SAA/FCC/RoHS		

Disclaimer:
Technical data is subject to change without prior notice.

ELEGANT HB04

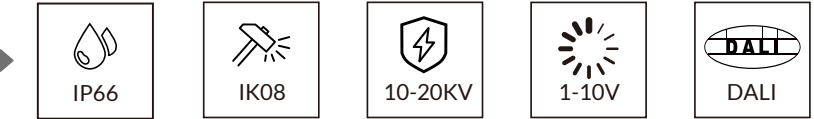
High Bay Light

Offered in 400W-1000W
Up to 140lm/W
Optical UV resistant PC lens with 94% light transmittance, IK08
Optical lighting distribution: 10°/ 25°/ 45°/ 60°/ 90°
Die-casting technology with ADC12, excellent thermal management
Top brand LED chip and driver, ensure the product quality and lifetime
Ingress protection rating: IP66



Features:

· Multiple Power:



Technical specification:

Model No.	ISL-UFO-D400W	ISL-UFO-D500W	ISL-UFO-D800W	ISL-UFO-D1000W
Power	400W	500W	800W	1000W
Input Voltage	AC100-277V; 50/60Hz			
Lumen EFF	150LM/W (±5%)			
LED Brand	LUMILEDS			
Driver Brand	MEANWELL / SOSEN			
CCT	3000K/4000K/5000K/5700K/6500K			
CRI	Ra>80(70,90 Optional)			
PF	0.95			
Beam Angle	10°/25°/45°/60°/90°			
IP Rating	IP66			
IK Rating	IK08			
Warranty	5 Years			
Life Span	50,000Hrs			
Working Temperature	-35°C- +50°C			
Dimmension(mm)	439*421mm		651*511mm	
Certification	CCC/CB/CE/SAA/FCC/RoHS			

Disclaimer:
Technical data is subject to change without prior notice.



ELEGANT HB05

High Bay Light

Offered in 100W, 150W, 200W and 240W
Up to 150lm/W
Optical UV resistant PC lens with 94% light transmittance, IK08
Optical lighting distribution: 60°/90°/120°
Die-casting technology with ADC12, Hollow design, increases the industrial appearance, maximizes the heat dissipation area to achieve excellent thermal management
Top brand LED chip and driver, ensure the product quality and lifetime
Ingress protection rating: IP65

Features:

· Multiple Power:



· Accessories



Technical specification:

Model No.	ISL-UFO-E100W	ISL-UFO-E150W	ISL-UFO-E200W	ISL-UFO-E240W
Power	100W	150W	200W	240W
Input Voltage	AC100-277V; 50/60Hz			
Lumen EFF	150LM/W (±5%)			
LED Brand	LUMILEDS			
Driver Brand	PHILIPS/SOSEN			
CCT	3000K/4000K/5000K/5700K/6500K			
CRI	Ra>80(70,90 Optional)			
PF	0.95			
Beam Angle	60°/90°/120°			
IP Rating	IP65			
IK Rating	IK08			
Warranty	5 Years			
Life Span	50,000Hrs			
Working Temperature	-35°C- +50°C			
Dimmension(mm)	248*129mm	295*140mm	320*154mm	320*154mm
Certification	CCC/CB/CE/SAA/FCC/RoHS			

Disclaimer:
Technical data is subject to change without prior notice.



ELEGANT HB06

High Bay Light

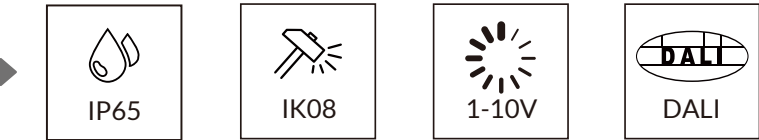
Offered in 100W, 150W, 200W, 240W and 300W
Up to 150lm/W
Optical UV resistant PC lens with 94% light transmittance, IK08
Optical lighting distribution: 60°/90°/120°
Die-casting technology with ADC12, excellent thermal management
Top brand LED chip and driver, ensure the product quality and lifetime
Ingress protection rating: IP65

Features:

· Multiple Power:



· Accessories



ELEGANT High Bay Light

Technical specification:

Model No.	ISL-UFO-F100W	ISL-UFO-F150W	ISL-UFO-F200W	ISL-UFO-F240W	ISL-UFO-F300W
Power	100W	150W	200W	240W	300W
Input Voltage	AC100-277V; 50/60Hz				
Lumen EFF	150LM/W (±5%)				
LED Brand	LUMILEDS				
Driver Brand	PHILIPS/SOSEN				
CCT	3000K/4000K/5000K/5700K/6500K				
CRI	Ra>80(70,90 Optional)				
PF	0.95				
Beam Angle	60°/90°/110°				
IP Rating	IP65				
IK Rating	IK08				
Warranty	5 Years				
Life Span	50,000Hrs				
Working Temperature	-35°C- +50°C				
Dimmension(mm)	246*145mm	270*159mm	320*182mm	320*182mm	390*194mm
Certification	CCC/CB/CE/SAA/FCC/RoHS				

Disclaimer:
Technical data is subject to change without prior notice.



ELEGANT HB07

High Bay Light

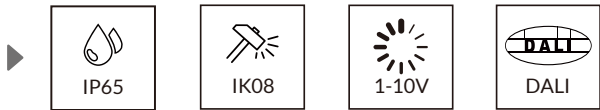
Offered in 100W, 150W, 200W and 240W
Up to 150lm/W
Optical UV resistant PC lens with 94% light transmittance, IK08
Optical lighting distribution: 60°/90°/120°
Die-casting technology with ADC12, excellent thermal management
Top brand LED chip and driver, ensure the product quality and lifetime
Ingress protection rating: IP65

Features:

· Multiple Power:



· Accessories



Technical specification:

Model No.	ISL-UFO-G100W	ISL-UFO-G150W	ISL-UFO-G200W	ISL-UFO-G240W
Power	100W	150W	200W	240W
Input Voltage	AC100-277V; 50/60Hz			
Lumen EFF	150LM/W (±5%)			
LED Brand	LUMILEDS			
Driver Brand	PHILIPS/SOSEN			
CCT	3000K/4000K/5000K/5700K/6500K			
CRI	Ra>80(70,90 Optional)			
PF	0.95			
Beam Angle	60°/90°/110°			
IP Rating	IP65			
IK Rating	IK08			
Warranty	5 Years			
Life Span	50,000Hrs			
Working Temperature	-35°C- +50°C			
Dimmension(mm)	270*149mm	300*158mm	330*164mm	330*164mm
Certification	CCC/CB/CE/SAA/FCC/RoHS			

Disclaimer:
Technical data is subject to change without prior notice.



ELEGANT HB08

High Bay Light

Offered in 100W, 150W, 200W and 240W
Up to 150lm/W, 170lm/W, 190lm/W
Optional UV resistant PC lens with 94% light transmittance, IK08
Optional lighting distribution: 60°/90°/120°
Die-casting technology by ADC12, excellent thermal management
Top brand LED chip and driver, ensure the product quality and lifetime
Ingress Protection Rating: IP65
Options: Motion Sensor (plug and play)
Options: 3CCT & Power Adjustable

Features:

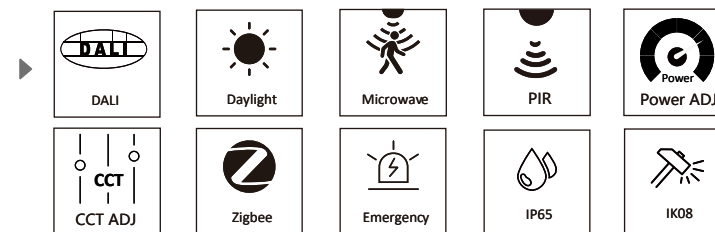
· 3CCT & Power Adjustable Solution:

	Power Adjustable :			3CCT Adjustable :		
	A	B	C	WW	NW	CW
	100W	80W	60W	4000K	5000K	5700K
	150W	120W	90W			
	200W	160W	120W			
	240W	200W	150W			

· Accessories



· Emergency Kit



ELEGANT High Bay Light

Technical specification:

Model No.	ISL-UFO-H100W	ISL-UFO-H150W	ISL-UFO-H200W	ISL-UFO-H240W
Power	100W	150W	200W	240W
Input Voltage	AC100-277V; 50/60Hz			
Lumen EFF	150LM/W,170LM/W, 190LM/W (±5%)			
LED Brand	LUMILEDS			
Driver Brand	PHILIPS/SOSEN			
CCT	3000K/4000K/5000K/5700K/6500K/3CCT Adjustable			
CRI	Ra>80(70,90 Optional)			
PF	0.95			
Beam Angle	60°/90°/120°			
IP Rating	IP65			
IK Rating	IK08			
Warranty	5 Years			
Life Span	50,000Hrs			
Working Temperature	-35°C- +50°C			
Dimension(mm)	259*106mm	285*111mm	341*120mm	373*137mm
Certification	UL/CCC/CB/CE/SAA/FCC/RoHS			

Disclaimer:
Technical data is subject to change without prior notice.



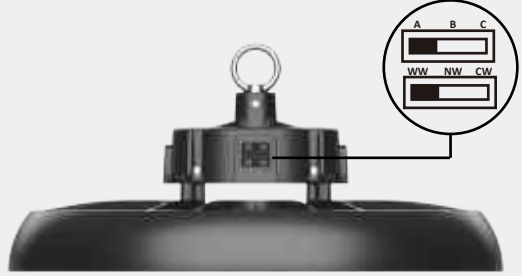
ELEGANT HB09

High Bay Light

Offered in 100W, 150W, 200W and 240W
Up to 150lm/W, 170lm/W, 190lm/W
Optical UV resistant PC lens with 94% light transmittance, IK08
Optical lighting distribution: 60°/90°/120°
Die-casting technology by ADC12, excellent thermal management
Top brand LED chip and driver, ensure the product quality and lifetime
Ingress Protection Rating: IP65
Options: 3CCT & Power Adjustable

Features:

· 3CCT & Power Adjustable Solution:



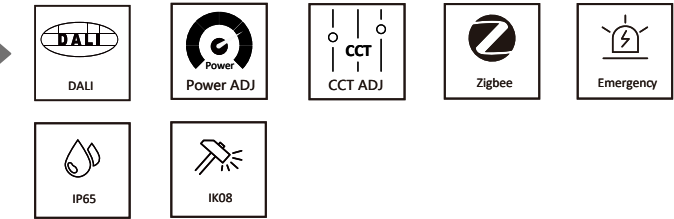
Power Adjustable :

A	B	C
100W	80W	60W
150W	120W	90W
200W	160W	120W
240W	200W	150W

3CCT Adjustable :

WW	NW	CW
4000K	5000K	5700K

Accessories



ELEGANT High Bay Light

Technical specification:

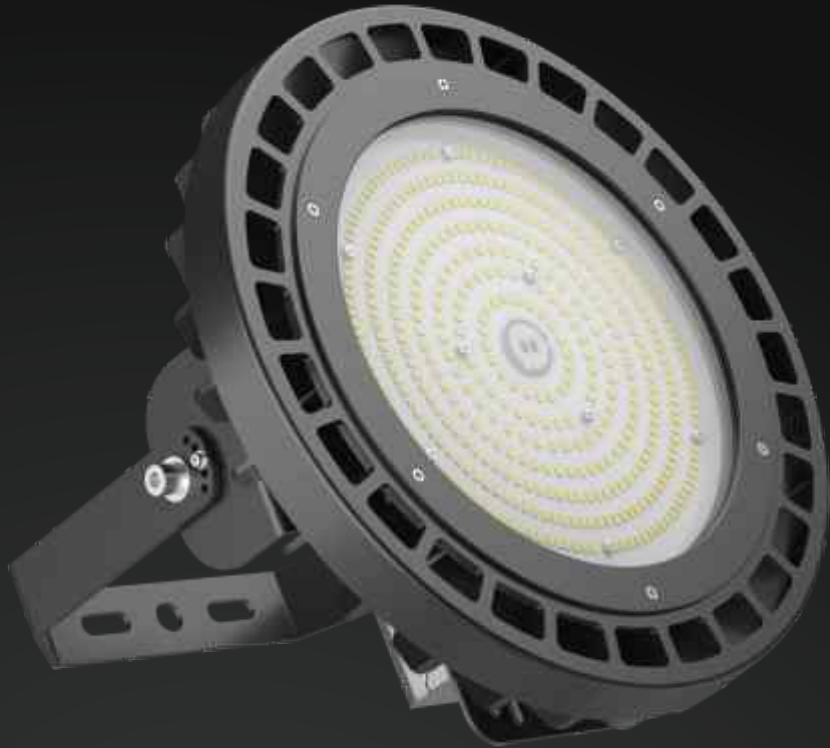
Model No.	ISL-HB09-A-100W	ISL-HB09-A-150W	ISL-HB09-A-200W	ISL-HB09-A-240W
Power	100W	150W	200W	240W
Input Voltage	AC100-277V; 50/60Hz			
Lumen EFF	150LM/W,170LM/W, 190LM/W (±5%)			
LED Brand	LUMILEDS			
Driver Brand	PHILIPS/SOSEN			
CCT	3000K/4000K/5000K/5700K/6500K/3CCT Adjustable			
CRI	Ra>80(70,90 Optional)			
PF	0.95			
Beam Angle	60°/90°/120°			
IP Rating	IP65			
IK Rating	IK08			
Warranty	5 Years			
Life Span	50,000Hrs			
Working Temperature	-35°C- +50°C			
Dimmension(mm)	236*101mm	286*106mm	336*115mm	373*137mm
Certification	UL/CCC/CB/CE/SAA/FCC/RoHS			

Disclaimer:
Technical data is subject to change without prior notice.

ELEGANT HB10

High Bay Light

Offered in 100W, 150W, 200W and 240W
Up to 150lm/W
4mm tempered glass cover with 94% light transmittance, IK08
Optical light distribution: 120°
Die-casting technology with ADC12, excellent thermal management and balance the internal & external temperature, reduce chip Tj and light decay
Top brand LED chip and driver, ensure the product quality and lifetime
Ingress protection rating: IP65

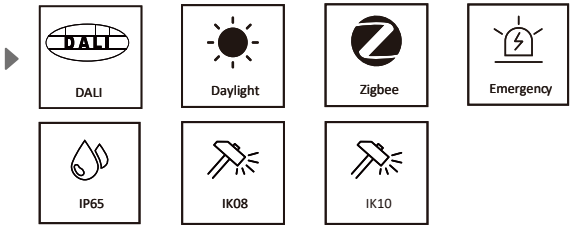


Features:

· Multiple Power:



· Accessories



Technical specification:

Model No.	ISL-HB10-A-100W	ISL-HB10-A-150W	ISL-HB10-A-200W	ISL-HB10-A-240W
Power	100W	150W	200W	240W
Input Voltage	AC100-277V; 50/60Hz			
Lumen EFF	150LM/W (±5%)			
LED Brand	LUMILEDS			
Driver Brand	PHILIPS/SOSEN			
CCT	3000K/4000K/5000K/5700K/6500K			
CRI	Ra>80(70,90 Optional)			
PF	0.95			
Beam Angle	120°			
IP Rating	IP65			
IK Rating	IK08			
Warranty	5 Years			
Life Span	50,000Hrs			
Working Temperature	-35°C- +50°C			
Dimmension(mm)	280*136mm	280*136mm	280*136mm	320*136mm
Certification	CCC/CB/CE/SAA/FCC/RoHS			

Disclaimer:
Technical data is subject to change without prior notice.



ELEGANT HB11

High Bay Light

Offered in 100W, 150W, 200W, 240W and 300W
Up to 150lm/W, 170lm/W, 190lm/W
Optical UV resistant PC lens with 94% light transmittance, IK08
Optical lighting distribution: 60°/90°/120°
Die-casting technology by ADC12, excellent thermal management
Top brand LED chip and driver, ensure the product quality and lifetime
Ingress Protection Rating: IP65
Options: 3CCT & Power Adjustable

Features:

· 3CCT & Power Adjustable Solution:

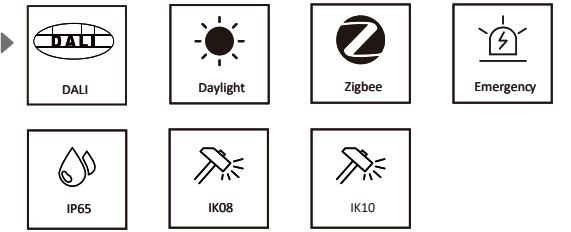
Power Adjustable :

A	B	C
100W	80W	60W
150W	120W	90W
200W	160W	120W
240W	200W	150W
300W	240W	180W

3CCT Adjustable :

WW	NW	CW
4000K	5000K	5700K

· Accessories



Technical specification:

Model No.	ISL-HB11-A-100W	ISL-HB11-A-150W	ISL-HB11-A-200W	ISL-HB11-A-240W	ISL-HB11-A-300W
Power	100W	150W	200W	240W	300W
Input Voltage	AC100-277V; 50/60Hz				
Lumen EFF	150LM/W,170LM/W, 190LM/W (±5%)				
LED Brand	LUMILEDS				
Driver Brand	PHILIPS/SOSEN				
CCT	3000K/4000K/5000K/5700K/6500K/3CCT Adjustable				
CRI	Ra>80(70,90 Optional)				
PF	0.95				
Beam Angle	60°/90°/110°				
IP Rating	IP65				
IK Rating	IK08				
Warranty	5 Years				
Life Span	50,000Hrs				
Working Temperature	-35°C- +50°C				
Dimmension(mm)	260*111mm	306*122mm	362*127mm	362*127mm	408*132mm
Certification	CCC/CB/CE/SAA/FCC/RoHS				

Disclaimer:
Technical data is subject to change without prior notice.



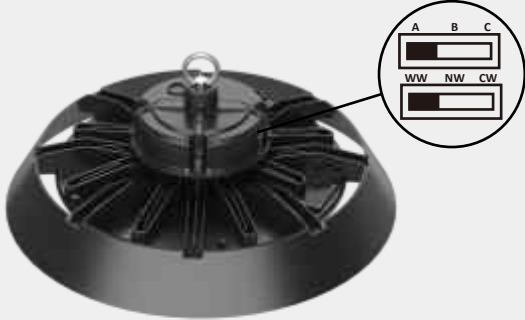
ELEGANT HB12

High Bay Light

Offered in 100W, 150W, 200W, 240W and 300W
Up to 150lm/W, 170lm/W, 190lm/W
Optical UV resistant PC lens with 94% light transmittance, IK08
Optical lighting distribution: 60°/90°/120°
Die-casting technology by ADC12, excellent thermal management
Top brand LED chip and driver, ensure the product quality and lifetime
Ingress protection rating: IP65
Options: Motion Sensor (plug and play)
Options: 3CCT & Power Adjustable

Features:

· 3CCT & Power Adjustable Solution:



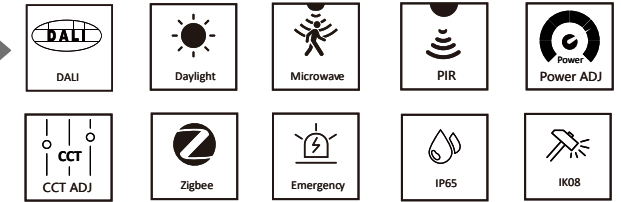
Power Adjustable :

A	B	C
100W	80W	60W
150W	120W	90W
200W	160W	120W
240W	200W	150W
300W	240W	180W

3CCT Adjustable :

WW	NW	CW
4000K	5000K	5700K

· Accessories



Technical specification:

Model No.	ISL-HB12-A-100W	ISL-HB12-A-150W	ISL-HB12-A-200W	ISL-HB12-A-240W	ISL-HB12-A-300W
Power	100W	150W	200W	240W	300W
Input Voltage	AC100-277V; 50/60Hz				
Lumen EFF	150LM/W,170LM/W, 190LM/W (±5%)				
LED Brand	LUMILEDS				
Driver Brand	PHILIPS/SOSEN				
CCT	3000K/4000K/5000K/5700K/6500K/3CCT Adjustable				
CRI	Ra>80(70,90 Optional)				
PF	0.95				
Beam Angle	60°/90°/110°				
IP Rating	IP65				
IK Rating	IK08				
Warranty	5 Years				
Life Span	50,000Hrs				
Working Temperature	-35°C - +50°C				
Dimmension(mm)	260*111mm	306*122mm	362*127mm	362*127mm	408*132mm
Certification	CCC/CB/CE/SAA/FCC/RoHS				

Disclaimer:
Technical data is subject to change without prior notice.



ELEGANT HB13

High Bay Light

Offered in 100W, 150W, 200W
Up to 150lm/W, 170lm/W, 190lm/W
Optical UV resistant PC lens with 94% light transmittance, IK08
Optical lighting distribution: 60°/90°/110°
Die-casting technology by ADC12, excellent thermal management
Top brand LED chip and driver, ensure the product quality and lifetime
Ingress protection rating: IP65

Features:

· Multiple Power:



· Accessories



Technical specification:

Model No.	ISL-HB13-A-100W	ISL-HB13-A-150W	ISL-HB13-A-200W
Power	100W	150W	200W
Input Voltage	AC100-277V; 50/60Hz		
Lumen EFF	150LM/W,170LM/W,190LM/W (±5%)		
LED Brand	SANAN		
Driver Brand	ZH		
CCT	3000K/4000K/5000K/5700K/6500K		
CRI	Ra>80(70,90 Optional)		
PF	0.95		
Beam Angle	60°/90°/110°		
IP Rating	IP66		
IK Rating	IK08		
Warranty	5 Years		
Life Span	50,000Hrs		
Working Temperature	-35°C- +45°C		
Dimmension(mm)	231*84mm	282*89mm	325*92mm
Certification	CCC/CB/CE/SAA/FCC/RoHS		

Disclaimer:
Technical data is subject to change without prior notice.

ELEGANT HB14

High Bay Light

Offered in 100W, 150W, 200W
Up to 150lm/W, 170lm/W, 190lm/W
Optical UV resistant PC lens with 94% light transmittance, IK08
Optical lighting distribution: 60°/90°/110°
Die-casting technology by ADC12, excellent thermal management
Top brand LED chip and driver, ensure the product quality and lifetime
Ingress protection rating: IP65



Features:

· 3CCT & Power Adjustable Solution:

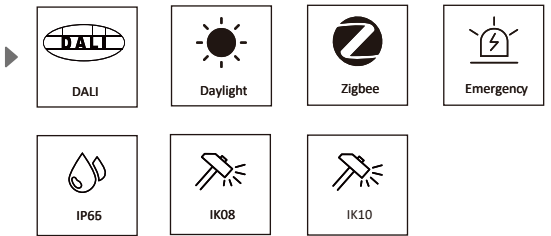
Power Adjustable :

A	B	C
100W	80W	60W
150W	120W	90W
200W	160W	120W

3CCT Adjustable :

WW	NW	CW
4000K	5000K	5700K

· Accessories



Technical specification:

Model No.	ISL-HB14-A-100W	ISL-HB14-A-150W	ISL-HB14-A-200W
Power	100W	150W	200W
Input Voltage	AC100-277V; 50/60Hz		
Lumen EFF	150LM/W,170LM/W,190LM/W (±5%)		
LED Brand	SANAN		
Driver Brand	ZH		
CCT	3000K/4000K/5000K/5700K/6500K		
CRI	Ra>80(70,90 Optional)		
PF	0.95		
Beam Angle	60°/90°/110°		
IP Rating	IP66		
IK Rating	IK08		
Warranty	5 Years		
Life Span	50,000Hrs		
Working Temperature	-35°C- +45°C		
Dimmension(mm)	250*67mm	299*72mm	340*97mm
Certification	CCC/CB/CE/SAA/FCC/RoHS		

Disclaimer:
Technical data is subject to change without prior notice.




ELEGANT HB15

High Bay Light

Offered in 100W, 150W, 200W, 240W and 300W
Up to 150lm/W, 170lm/W, 190lm/W
Optical UV resistant PC lens with 94% light transmittance, IK08
Optical lighting distribution: 60°/90°/120°
Die-casting technology by ADC12, excellent thermal management
Top brand LED chip and driver, ensure the product quality and lifetime
Ingress protection rating: IP65
Options: 3CCT & Power Adjustable

Features:

· 3CCT & Power Adjustable Solution:



Power Adjustable :

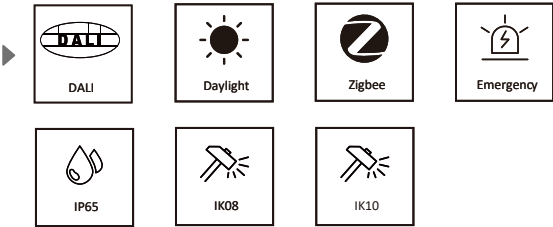
A	B	C
100W	80W	60W
150W	120W	90W
200W	160W	120W
240W	200W	150W
300W	240W	180W

3CCT Adjustable :

WW	NW	CW
4000K	5000K	5700K



· Accessories



Technical specification:

Model No.	SL-HB15-A-100W	ISL-HB15-A-150W	ISL-HB15-A-200W	ISL-HB15-A-240W	ISL-HB15-A-300W
Power	100W	150W	200W	240W	300W
Input Voltage	AC100-277V; 50/60Hz				
Lumen EFF	150LM/W,170LM/W, 190LM/W (±5%)				
LED Brand	LUMILEDS				
Driver Brand	PHILIPS/SOSEN				
CCT	3000K/4000K/5000K/5700K/6500K/3CCT Adjustable				
CRI	Ra>80(70,90 Optional)				
PF	0.95				
Beam Angle	60°/90°/110°				
IP Rating	IP65				
IK Rating	IK08				
Warranty	5 Years				
Life Span	50,000Hrs				
Working Temperature	-35°C- +50°C				
Dimmension(mm)	237*109mm	260*111mm	306*122mm	362*127mm	408*132mm
Certification	CCC/CB/CE/SAA/FCC/RoHS				

Disclaimer:
Technical data is subject to change without prior notice.



ELEGANT HB16

High Bay Light

Offered in 100W, 150W, 200W, 240W and 300W
Up to 150lm/W, 170lm/W, 190lm/W
Optical UV resistant PC lens with 94% light transmittance, IK08
Optical lighting distribution: 60°/90°/120°
Die-casting technology by ADC12, excellent thermal management
Top brand LED chip and driver, ensure the product quality and lifetime
Ingress protection rating: IP65
Options: Motion Sensor (plug and play)
Options: 3CCT & Power Adjustable

Features:

· 3CCT & Power Adjustable Solution:

Power Adjustable :

A	B	C
100W	80W	60W
150W	120W	90W
200W	160W	120W
240W	200W	150W
300W	240W	180W

3CCT Adjustable :

WW	NW	CW
4000K	5000K	5700K



· Accessories

DALI

Daylight

Microwave

PIR

Power

Power ADJ

CCT ADJ

Zigbee

Emergency

IP65

IK08

Technical specification:

Model No.	SL-HB16-A-100W	ISL-HB16-A-150W	ISL-HB16-A-200W	ISL-HB16-A-240W	ISL-HB16-A-300W
Power	100W	150W	200W	240W	300W
Input Voltage	AC100-277V; 50/60Hz				
Lumen EFF	150LM/W,170LM/W, 190LM/W (±5%)				
LED Brand	LUMILEDS				
Driver Brand	PHILIPS/SOSEN				
CCT	3000K/4000K/5000K/5700K/6500K/3CCT Adjustable				
CRI	Ra>80(70,90 Optional)				
PF	0.95				
Beam Angle	60°/90°/110°				
IP Rating	IP65				
IK Rating	IK08				
Warranty	5 Years				
Life Span	50,000Hrs				
Working Temperature	-35°C - +50°C				
Dimmension(mm)	237*109mm	260*111mm	306*122mm	362*127mm	408*132mm
Certification	CCC/CB/CE/SAA/FCC/RoHS				

Disclaimer:
Technical data is subject to change without prior notice.



ELEGANT HB17

High Bay Light

Offered in 60W, 100W, 150W, 200W, 240W, 300W, 400W and 500W
Up to 150lm/W, 170lm/W, 190lm/W
1-10V Dimmable & Power selectable
Optical UV resistant PC lens with 94% light transmittance, IK08
Die-casting technology by ADC12, excellent thermal management
Top brand LED chip and driver, ensure the product quality and lifetime
5Years/ 7Years warranty
Options: 3CCT & Power Adjustable

Features:

· 3CCT & Power Adjustable Solution:



Power Adjustable :

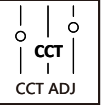
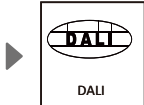
A	B	C
100W	80W	60W
150W	120W	90W
200W	160W	120W
240W	200W	150W
300W	240W	180W
500W	400W	300W

3CCT Adjustable :

WW	NW	CW
4000K	5000K	5700K



Accessories



Technical specification:

Model No.	SL-HB17-A-60W	SL-HB17-A-100W	ISL-HB17-A-150W	ISL-HB17-A-200W	ISL-HB17-A-240W	ISL-HB17-A-300W	ISL-HB17-A-400W	ISL-HB17-A-500W
Power	60W	100W	150W	200W	240W	300W	400W	500W
Input Voltage	AC100-277V; 50/60Hz							
Lumen EFF	150LM/W,170LM/W, 190LM/W (±5%)							
LED Brand	LUMILEDS							
Driver Brand	PHILIPS/SOSEN							
CCT	3000K/4000K/5000K/5700K/6500K/3CCT Adjustable							
CRI	Ra>80(70,90 Optional)							
PF	0.95							
Beam Angle	60°/90°/120°							
IP Rating	IP65							
IK Rating	IK08							
Warranty	5 Years							
Life Span	50,000Hrs							
Working Temperature	-35°C - +50°C							
Dimmension(mm)	233*145mm	260*145mm	287*147mm	305*149mm	305*149mm	342*168mm	447*178mm	447*178mm
Certification	CCC/CB/CE/SAA/FCC/RoHS							

Disclaimer:
Technical data is subject to change without prior notice.



ELEGANT HB18

High Bay Light

Offered in 60W, 100W, 150W, 200W, 240W, 300W, 400W and 500W
Up to 150lm/W, 170lm/W, 190lm/W
1-10V Dimmable & Power selectable
Optical UV resistant PC lens with 94% light transmittance, IK08
Die-casting technology by ADC12, excellent thermal management
Top brand LED chip and driver, ensure the product quality and lifetime
5Years/ 7Years warranty
Options: Motion Sensor (plug and play)
Options: 3CCT & Power Adjustable

Features:

· 3CCT & Power Adjustable Solution:



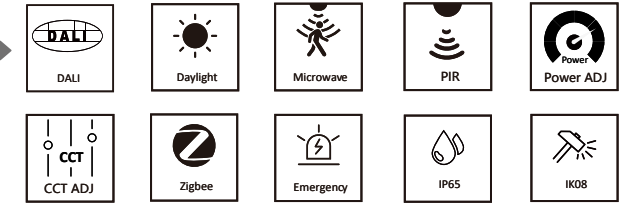
Power Adjustable :

A	B	C
100W	80W	60W
150W	120W	90W
200W	160W	120W
240W	200W	150W
300W	240W	180W
500W	400W	300W

3CCT Adjustable :

WW	NW	CW
4000K	5000K	5700K

· Accessories



Technical specification:

Model No.	SL-HB18-A-60W	SL-HB18-A-100W	ISL-HB18-A-150W	ISL-HB18-A-200W	ISL-HB18-A-240W	ISL-HB18-A-300W	ISL-HB18-A-400W	ISL-HB18-A-500W
Power	60W	100W	150W	200W	240W	300W	400W	500W
Input Voltage	AC100-277V; 50/60Hz							
Lumen EFF	150LM/W,170LM/W, 190LM/W (±5%)							
LED Brand	LUMILEDS							
Driver Brand	PHILIPS/SOSEN							
CCT	3000K/4000K/5000K/5700K/6500K/3CCT Adjustable							
CRI	Ra>80(70,90 Optional)							
PF	0.95							
Beam Angle	60°/90°/120°							
IP Rating	IP65							
IK Rating	IK08							
Warranty	5 Years							
Life Span	50,000Hrs							
Working Temperature	-35°C - +50°C							
Dimmension(mm)	233*145mm	260*145mm	287*147mm	305*149mm	305*149mm	342*168mm	447*178mm	447*178mm
Certification	CCC/CB/CE/SAA/FCC/RoHS							

Disclaimer:
Technical data is subject to change without prior notice.



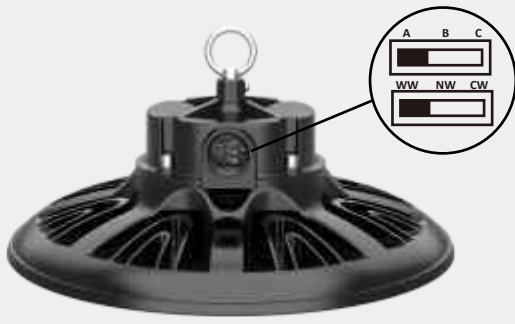
ELEGANT HB19

High Bay Light

Offered in 100W, 150W, 200W and 240W
Up to 150lm/W, 170lm/W, 190lm/W
1-10V Dimmable & Power selectable
Optical UV resistant PC lens with 94% light transmittance, IK08
Die-casting technology by ADC12, excellent thermal management
Top brand LED chip and driver, ensure the product quality and lifetime
5Years/ 7Years warranty
Options: Motion Sensor (plug and play)
Options: 3CCT & Power Adjustable

Features:

· 3CCT & Power Adjustable Solution:



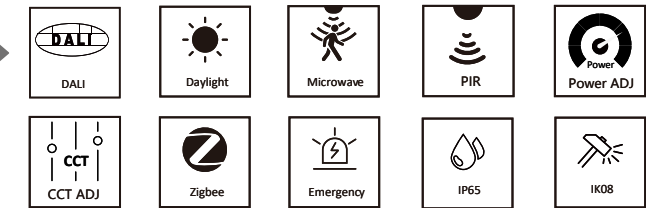
Power Adjustable :

A	B	C
120W	100W	80W
150W	120W	100W
200W	150W	100W
240W	200W	150W

3CCT Adjustable :

WW	NW	CW
4000K	5000K	5700K

· Accessories



ELEGANT High Bay Light

Technical specification:

Model No.	SL-HB19-A-100W	ISL-HB19-A-150W	ISL-HB19-A-200W	ISL-HB19-A-240W
Power	100W	150W	200W	240W
Input Voltage	AC100-277V; 50/60Hz			
Lumen EFF	150LM/W,170LM/W, 190LM/W (±5%)			
LED Brand	LUMILEDS			
Driver Brand	PHILIPS/SOSEN			
CCT	3000K/4000K/5000K/5700K/6500K			
CRI	Ra>80(70,90 Optional)			
PF	0.95			
Beam Angle	60°/90°/120°			
IP Rating	IP65			
IK Rating	IK08			
Warranty	5 Years			
Life Span	50,000Hrs			
Working Temperature	-35°C- +45°C			
Dimmension(mm)	233*145mm	260*145mm	287*147mm	305*149mm
Certification	CCC/CB/CE/SAA/FCC/RoHS			

Disclaimer:
Technical data is subject to change without prior notice.



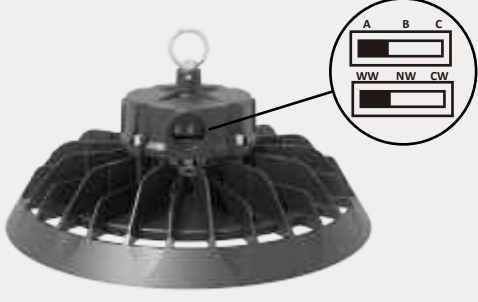
ELEGANT HB20

High Bay Light

Offered in 100W, 150W, 200W and 240W
Up to 150lm/W, 170lm/W, 190lm/W
1-10V Dimmable & Power selectable
Optical UV resistant PC lens with 94% light transmittance, IK08
Die-casting technology by ADC12, excellent thermal management
Top brand LED chip and driver, ensure the product quality and lifetime
5Years/ 7Years warranty
Options: 3CCT & Power Adjustable

Features:

· 3CCT & Power Adjustable Solution:



Power Adjustable :

A	B	C
100W	80W	60W
150W	120W	90W
200W	160W	120W
240W	200W	150W

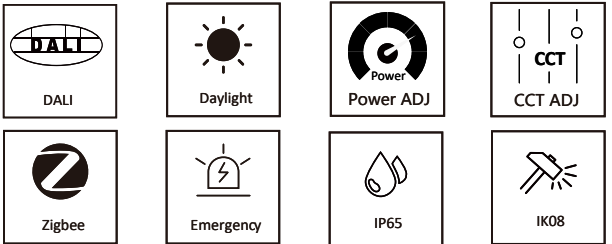
3CCT Adjustable :

WW	NW	CW
4000K	5000K	5700K

· Multiple Power:



· Accessories



Technical specification:

Model No.	ISL-HB20-A-100W	ISL-HB20-A-150W	ISL-HB20-A-200W	ISL-HB20-A-240W
Power	100W	150W	200W	240W
Input Voltage	AC100-277V; 50/60Hz			
Lumen EFF	150LM/W,170LM/W, 190LM/W (±5%)			
LED Brand	LUMILEDS			
Driver Brand	PHILIPS/SOSEN			
CCT	3000K/4000K/5000K/5700K/6500K/3CCT Adjustable			
CRI	Ra>80(70,90 Optional)			
PF	0.95			
Beam Angle	60°/90°/120°			
IP Rating	IP65			
IK Rating	IK08			
Warranty	5 Years			
Life Span	50,000Hrs			
Working Temperature	-35°C- +50°C			
Dimmension(mm)	270*158mm	295*162mm	315*165mm	315*165mm
Certification	UL/CCC/CB/CE/SAA/FCC/RoHS			

Disclaimer:
Technical data is subject to change without prior notice.



ELEGANT HB21

High Bay Light

Offered in 100W, 150W, 200W and 240W
Up to 150lm/W, 170lm/W, 190lm/W
1-10V Dimmable & Power selectable
Optical UV resistant PC lens with 94% light transmittance, IK08
Die-casting technology by ADC12, excellent thermal management
Top brand LED chip and driver, ensure the product quality and lifetime
5Years/ 7Years warranty
Options: Motion Sensor (plug and play)
Options: 3CCT & Power Adjustable

Features:

· Multiple Power:

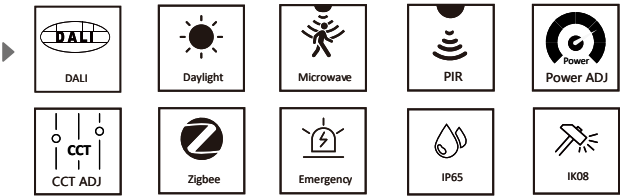


· Multiple Power:



Power Adjustable :		
A	B	C
100W	80W	60W
150W	120W	90W
200W	160W	120W
240W	200W	150W
3CCT Adjustable :		
WW	NW	CW
4000K	5000K	5700K

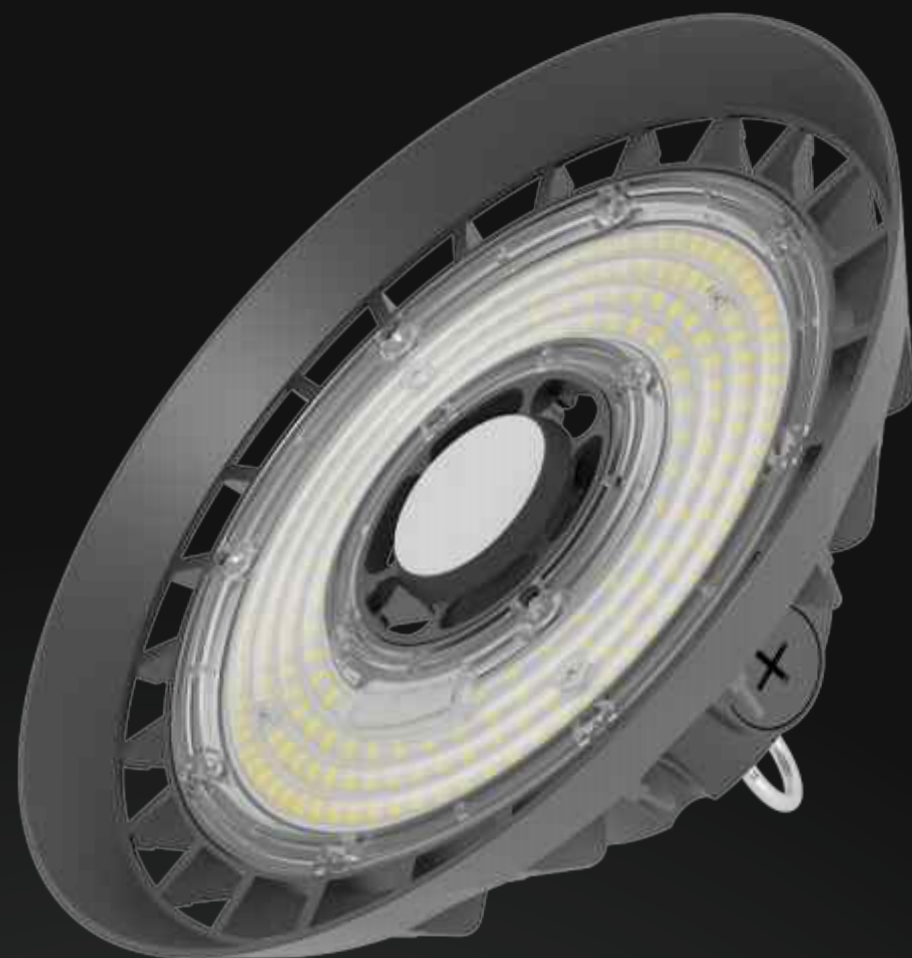
· Accessories



Technical specification:

Model No.	ISL-HB21-A-100W	ISL-HB21-A-150W	ISL-HB21-A-200W	ISL-HB21-A-240W
Power	100W	150W	200W	240W
Input Voltage	AC100-277V; 50/60Hz			
Lumen EFF	150LM/W,170LM/W, 190LM/W (±5%)			
LED Brand	LUMILEDS			
Driver Brand	PHILIPS/SOSEN			
CCT	3000K/4000K/5000K/5700K/6500K/3CCT Adjustable			
CRI	Ra>80(70,90 Optional)			
PF	0.95			
Beam Angle	60°/90°/120°			
IP Rating	IP65			
IK Rating	IK08			
Warranty	5 Years			
Life Span	50,000Hrs			
Working Temperature	-35°C- +50°C			
Dimmension(mm)	270*158mm	295*162mm	315*165mm	315*165mm
Certification	UL/CCC/CB/CE/SAA/FCC/RoHS			

Disclaimer:
Technical data is subject to change without prior notice.



ELEGANT HB22

High Bay Light

Offered in 100W, 150W, 200W and 240W
Up to 150lm/W, 170lm/W, 190lm/W
1-10V Dimmable & Power selectable
Optical UV resistant PC lens with 94% light transmittance, IK08
Die-casting technology by ADC12, excellent thermal management
Top brand LED chip and driver, ensure the product quality and lifetime
5Years/ 7Years warranty
Options: Motion Sensor (plug and play)
Options: 3CCT & Power Adjustable

Features:

· Multiple Power:



· Multiple Power:



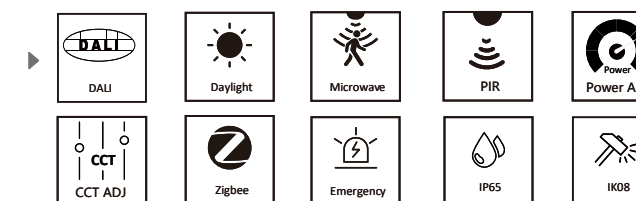
Power Adjustable :

A	B	C
100W	80W	60W
150W	120W	90W
200W	160W	120W
240W	200W	150W

3CCT Adjustable :

VW	NW	CW
4000K	5000K	5700K

· Accessories




ELEGANT High Bay Light

Technical specification:

Model No.	ISL-HB22-A-100W	ISL-HB22-A-150W	ISL-HB22-A-200W	ISL-HB22-A-240W
Power	100W	150W	200W	240W
Input Voltage	AC100-277V; 50/60Hz			
Lumen EFF	150LM/W,170LM/W (±5%)			
LED Brand	LUMILEDS			
Driver Brand	PHILIPS/SOSEN			
CCT	3000K/4000K/5000K/5700K/6500K/3CCT Adjustable			
CRI	Ra>80(70,90 Optional)			
PF	0.95			
Beam Angle	60°/90°/120°			
IP Rating	IP65			
IK Rating	IK08			
Warranty	5 Years			
Life Span	50,000Hrs			
Working Temperature	-35°C- +50°C			
Dimmension(mm)	270*158mm	270*158mm	295*162mm	315*165mm
Certification	UL/CCC/CB/CE/SAA/FCC/RoHS			

Disclaimer:
Technical data is subject to change without prior notice.



SMILY

Linear High Bay Light

The linear high-power luminaire is a versatile lighting package with many different applications. The large selection of optics means it is a sure winner in special applications such as a padel and tennis courts, and in warehouses or supermarkets with high requirements for light performance.



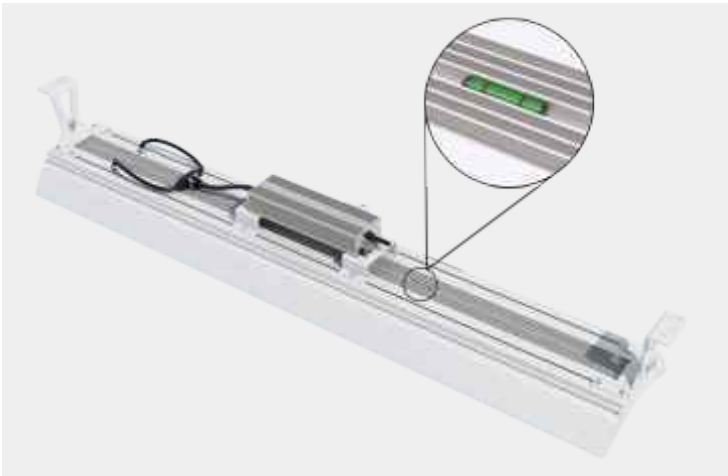
SMILY LHB01

Linear High Bay Light

Lumileds chips, high brightness, low light decay & long lifetime
International driver brand, overheat protection, high convert efficiency, high PF & surge protection, (1-10V,DALI2.0)
Die-casting technology with ADC12, excellent thermal management and balance the internal & external temperature, reduce chip Tj and light decay.
Optical UV resistant PC lens with 94% light transmittance, IK08. Light Distribution: 25°/45°/60°/90°/90°120°/80°150°/ASY-80°
Chain Installation. operation temperature: -35℃- +50℃

Features:

· Characteristic level meter



· High brightness, low light decay & long lifetime



· Ideal for warehouse, workshop, supermarket, underground parking lot, logistic center, indoor stadium and etc

▶

IP65

IK08

10-20KV

1-10V

DALI



Technical specification:

Model No.	ISL-LHB-A-50W	ISL-LHB-A-100W	ISL-LHB-A-150W	ISL-LHB-A-200W	ISL-LHB-A-300W	ISL-LHB-A-400W
Power	50W	100W	150W	200W	300W	400W
Input Voltage	AC100-277V; 50/60Hz					
Lumen EFF	140LM/W (±5%)					
LED Brand	LUMILEDS					
Driver Brand	MEANWELL / SOSEN					
CCT	3000K/4000K/5000K/5700K/6500K					
CRI	Ra>80(70,90 Optional)					
PF	0.95					
Beam Angle	60°/90°/80°150°/90°120°/ASY-80°					
IP Rating	IP65					
IK Rating	IK08					
Warranty	5 Years					
Life Span	50,000Hrs					
Working Temperature	-35℃- +50℃					
Dimmension(mm)	305*133*70mm	605*133*70mm	905*133*70mm	1205*133*70mm	1205*232*127mm	1205*232*127mm
Certification	CQC/CB/CE/SAA/FCC/RoHS					

Disclaimer:
Technical data is subject to change without prior notice.

ROBUS

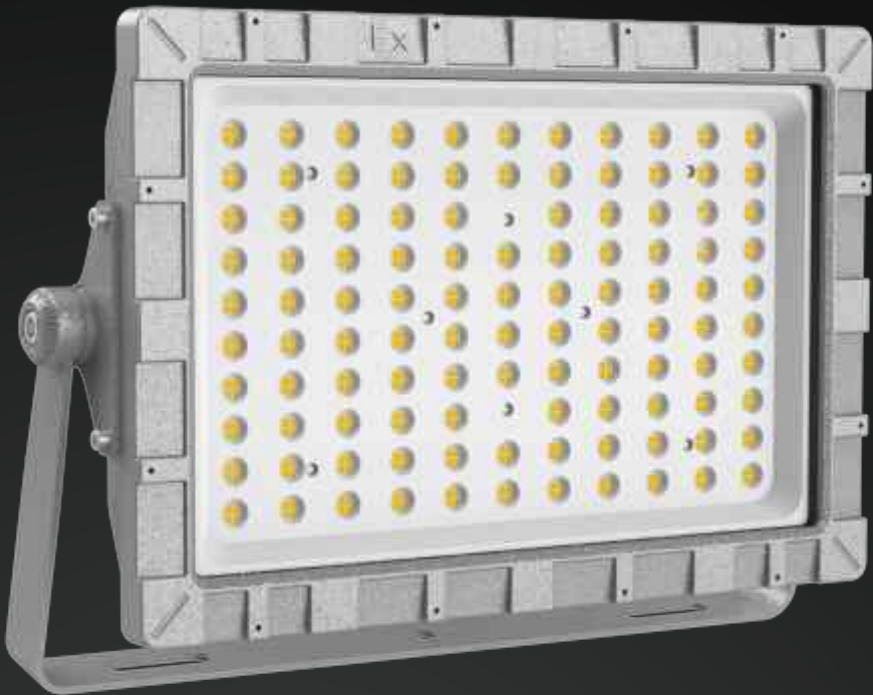
Explosion-proof High Bay Light

Explosion-proof luminaire is indispensable for industrial lighting. It can be flammable and combustible gas or dust environment like generator factory, heavy industrial warehouse, papermaking factory, dock, platform, dockyard, chemical plant, equipment processing factory, etc.

ROBUS EX01-A

Explosion-proof Flood Light

Offered in 50W to 240W
Light efficiency up to 140lm/W
Lumileds chips, High brightness, Low light decay & long lifetime
International driver brand, overheat protection, high convert efficiency, high PF & surge protection.
Die-casting technology with ADC12, excellent thermal management
8-10mm high strength tempered glass, further reduces the UV and anti-rust.
CODING: Ex db IIC T6 Gb; Ex tb IIC T80C Db



Features:

· Ideal for Petroleum, chemical industry, coal mine, mining industry, shipbuilding, port industry, petrochemical, metallurgical industry



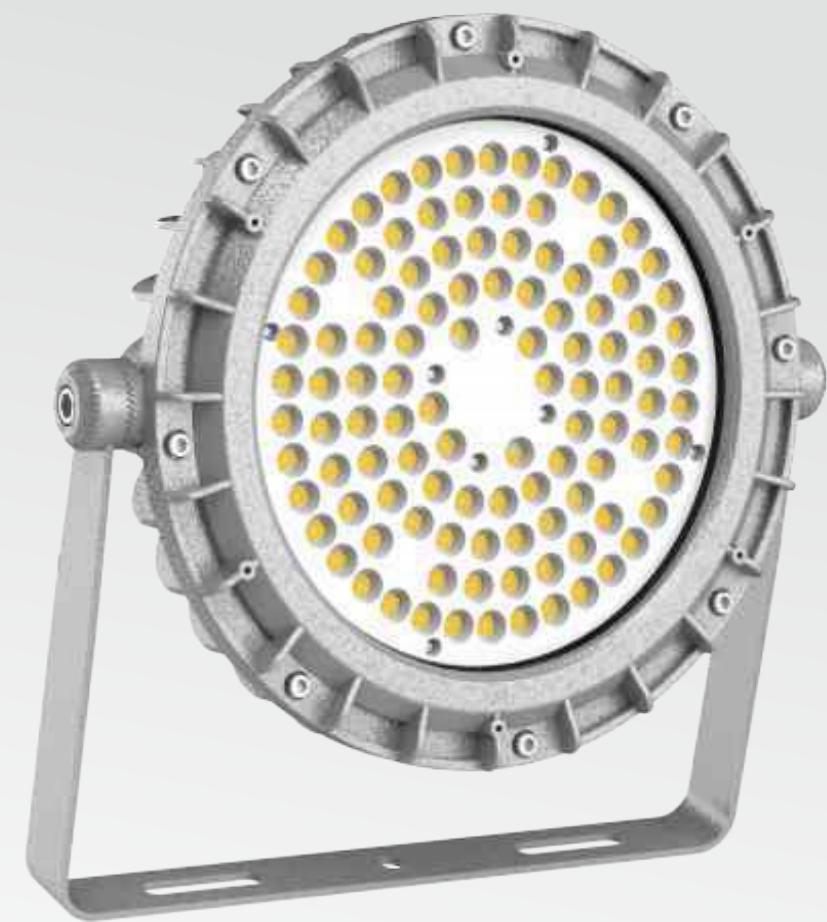
· High brightness, low light decay & long lifetime



Technical specification:

Model No.	ISL-EX01-A-50W	ISL-EX01-A-75W	ISL-EX01-A-100W	ISL-EX01-A-150W	ISL-EX01-A-200W	ISL-EX01-A-240W
Power	50W	75W	100W	150W	200W	240W
Input Voltage	AC100-277V; 50/60Hz					
Lumen EFF	140LM/W (±5%)					
LED Brand	LUMILEDS					
Driver Brand	SOSEN					
CCT	3000K/4000K/5000K/5700K/6500K					
CRI	Ra>80(70,90 Optional)					
PF	0.95					
Beam Angle	120°					
IP Rating	IP66					
IK Rating	IK08					
Warranty	5 Years					
Life Span	50,000Hrs					
Working Temperature	-35°C- +50°C					
Dimmension(mm)	304*170*128mm	382*230*141mm				522*310*145mm
Certification	Ex db IIC T6 Gb/Ex tb IIIC T80 C Db					

Disclaimer:
Technical data is subject to change without prior notice.



ROBUS EX01-B

Explosion-proof High Bay Light

Offered in 50W to 240W
Light efficiency up to 140lm/W
Lumileds chips, High brightness, Low light decay & long lifetime
International driver brand, overheat protection, high convert efficiency, high PF & surge protection.
Die-casting technology with ADC12, excellent thermal management
8-10mm high strength tempered glass, further reduces the UV and anti-rust.
CODING: Ex db IIC T6 Gb; Ex tb IIC T80C Db

Features:

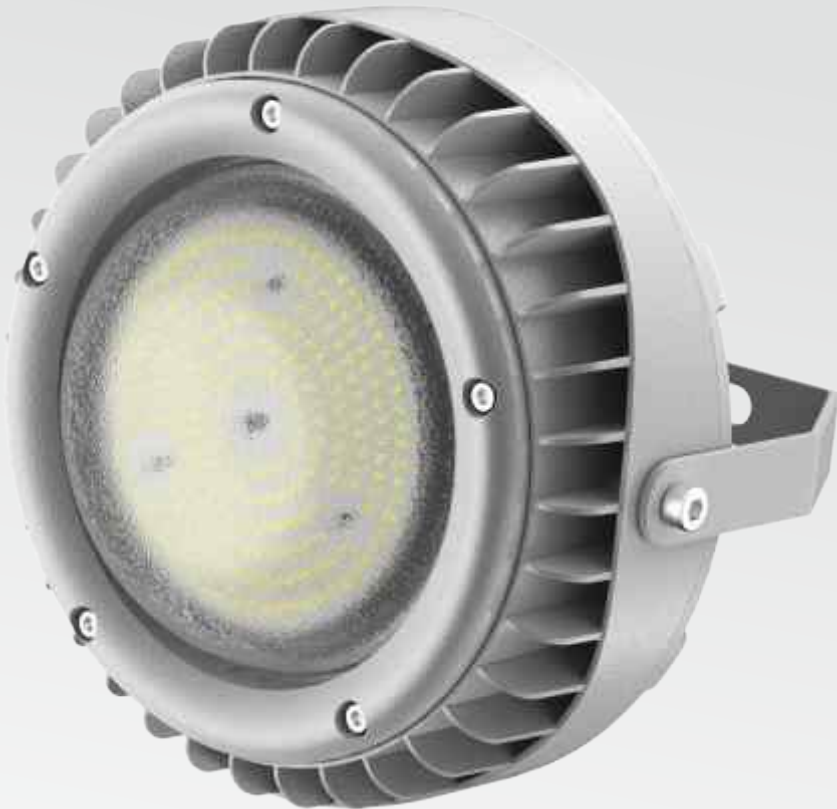
- Ideal for Petroleum, chemical industry, coal mine, mining industry, shipbuilding, port industry, petrochemical, metallurgical industry



Technical specification:

Model No.	ISL-EX01-B-50W	ISL-EX01-B-75W	ISL-EX01-B-100W	ISL-EX01-B-150W	ISL-EX01-B-200W	ISL-EX01-B-240W
Power	50W	75W	100W	150W	200W	240W
Input Voltage	AC100-277V; 50/60Hz					
Lumen EFF	140LM/W (±5%)					
LED Brand	LUMILEDS					
Driver Brand	SOSEN					
CCT	3000K/4000K/5000K/5700K/6500K					
CRI	Ra>80(70,90 Optional)					
PF	0.95					
Beam Angle	120°					
IP Rating	IP66					
IK Rating	IK08					
Warranty	5 Years					
Life Span	50,000Hrs					
Working Temperature	-35°C- +50°C					
Dimmension(mm)	267*215*229mm	313*260*229mm				383*330*257mm
Certification	Ex db IIC T6 Gb/Ex tb IIIC T80 C Db					

Disclaimer:
Technical data is subject to change without prior notice.



ROBUS EX01-C

Explosion-proof Platiorm Light

Offered in 50W to 120W
Light efficiency up to 140lm/W
Lumileds chips, High brightness, Low light decay & long lifetime
International driver brand, overheat protection, high convert efficiency, high PF & surge protection.
Die-casting technology with ADC12, excellent thermal management
8-10mm high strength tempered glass, further reduces the UV and anti-rust.
CODING: Ex db IIC T6 Gb; Ex tb IIC T80C Db

Features:

· Ideal for Petroleum, chemical industry, coal mine, mining industry, shipbuilding, port industry, petrochemical, metallurgical industry



Technical specification:

Model No.	ISL-EX01-C-50W	ISL-EX01-C-75W	ISL-EX01-C-100W	ISL-EX01-C-120W
Power	50W	75W	100W	120W
Input Voltage	AC100-277V; 50/60Hz			
Lumen EFF	140LM/W (±5%)			
LED Brand	LUMILEDS			
Driver Brand	SOSEN			
CCT	3000K/4000K/5000K/5700K/6500K			
CRI	Ra>80(70,90 Optional)			
PF	0.95			
Beam Angle	120°			
IP Rating	IP66			
IK Rating	IK08			
Warranty	5 Years			
Life Span	50,000Hrs			
Working Temperature	-35°C- +50°C			
Dimmension(mm)	222*189mm		262*212mm	
Certification	Ex db IIC T6 Gb/Ex tb IIIC T80 C Db			

Disclaimer:
Technical data is subject to change without prior notice.

HIGH-TEMPERATURE LIGHT

In industrial environments such as steel production, glass manufacturing, food processing and other manufacturing industries, temperatures can reach very high. Both traditional and LED lighting often fail at an accelerated rate under these harsh conditions, leading to reduced visibility, increased maintenance costs and potential safety risks.

IShineLux Products understands these challenges and offers specialised heat-resistant LED lighting that performs reliably in the most extreme conditions.

High-Temperature High Bay Light

Offered in 150W, 200W, 300W to 800W
Lumileds chips, high brightness, low light decay & long lifetime
International driver brand, overheat protection, high convert efficiency, high pf & surge protection, (1-10V,DALI)
Die-casting technology with ADC12, excellent thermal management
4mm high strength tempered glass, further reduces the UV and anti-rust, typically designed for coastal areas
Bracket installation, operation temperature: -35 C - +65 C

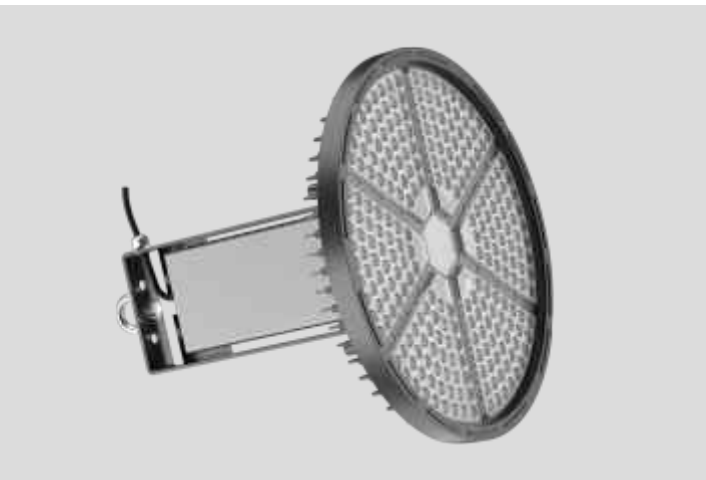


Features:

· Die-casting technology with ADC12



· High brightness, low light decay & long lifetime



Technical specification:

Model No.	ISL-HT-A150W	ISL-HT-A200W	ISL-HT-A300W	ISL-HT-A400W	ISL-HT-A500W	ISL-HT-A600W	ISL-HT-A800W
Power	150W	200W	300W	400W	500W	600W	800W
Input Voltage	AC100-277V; 50/60Hz						
Lumen EFF	150LM/W (±5%)						
LED Brand	LUMILEDS						
Driver Brand	SOSEN						
CCT	3000K/4000K/5000K/5700K/6500K						
CRI	Ra>80(70,90 Optional)						
PF	0.95						
Beam Angle	150W and 200W@120°/300W,400W,500W,600W and 800W@30°/60°/90°						
IP Rating	IP66						
IK Rating	IK08						
Warranty	5 Years						
Life Span	50,000Hrs						
Working Temperature	-35°C- +65°C						
Dimmension(mm)	280*400mm	320*400mm	448*485mm	448*485mm	448*485mm	598*507mm	598*507mm
Certification	CQC/TUV/CB/CE/SAA/FCC/RoHS						

Disclaimer:
Technical data is subject to change without prior notice.

High-Temperature Flood Light

Offered in 150W to 750W
Lumileds chips, high brightness, low light decay & long lifetime
International driver brand, overheat protection, high convert efficiency, high pf & surge protection, (1-10W,DALI)
Die-casting technology with ADC12, excellent thermal management
High strength polycarbonate lens, optical lighting distribution: 30°/45°/60°/90°/140°80°/120°40°60°
Optical UV resistant pc lens with 94% light transmittance, IK08.
Tempered glass optional for coastal areas
Bracket installation, operation temperature: -35 C - +65 C

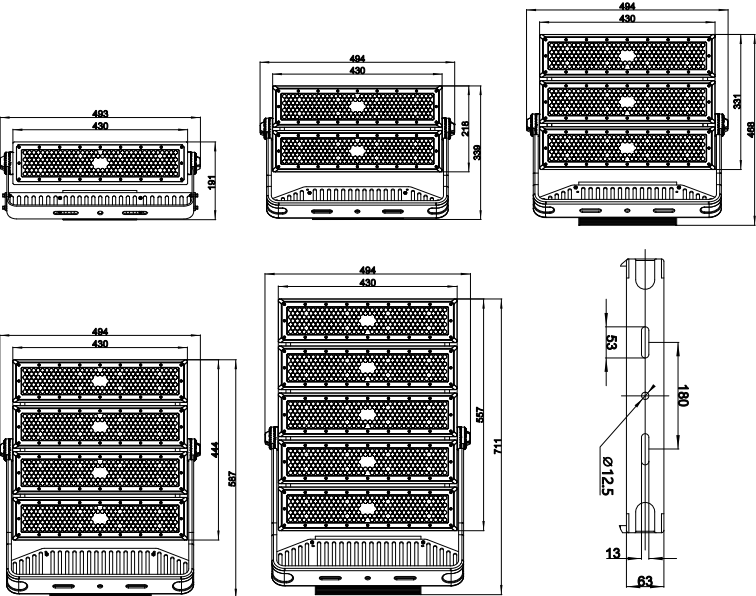


Features:

· Multiple Power:



· Dimension



Technical specification:

Model No.	ISL-HT-B150W	ISL-HT-B300W	ISL-HT-B450W	ISL-HT-B600W	ISL-HT-B750W
Power	150W	300W	450W	600W	750W
Input Voltage	AC100-277V; 50/60Hz				
Lumen EFF	150LM/W (±5%)				
LED Brand	LUMILEDS				
Driver Brand	SOSEN				
CCT	3000K/4000K/5000K/5700K/6500K				
CRI	Ra>80(70,90 Optional)				
PF	0.95				
Beam Angle	30°/45°/60°/90°/140°80°/120°40°60°				
IP Rating	IP66				
IK Rating	IK08				
Warranty	5 Years				
Life Span	50,000Hrs				
Working Temperature	-35°C- +65°C				
Dimmension(mm)	493*105*93mm	493*218*132mm	493*331*147mm	493*444*171mm	493*557*178mm
Certification	TUV/CB/CE/SAA/FCC/RoHS				

Disclaimer:
Technical data is subject to change without prior notice.

NOTES

IShineLUX